

John Mavrikakis

ENGLISH MULTIBOOK
e-learning for language students
(*grammar, vocabulary, reading*)

level 2 (A junior)

STUDENT'S



Level 1

Pre-junior

Level 2

Junior A

Level 3

Junior B

Level 4

A class

Level 5

B class

Level 6

C class

Level 7

D class

Level 8

E class

Level 9

FCE/ECCE



Σύστημα Καθοδηγούμενης Τηλεκπαίδευσης
για την ΕΜΠΕΔΩΣΗ, ΕΞΑΣΚΗΣΗ & ΕΠΑΝΑΛΗΨΗ της ύλης.



John Mavrikakis

ENGLISH MULTIBOOK

e-learning for language students
(grammar, vocabulary, reading)

<i>units</i>	level 2 (Junior A)-STUDENT'S
201	The alphabet, a, b, c, d, e, f, g, h, i, j, k, l, A, B, C, D, E, F, G, H, I, J, K, L.....page 3
202	The alphabet, a, b, c, d, e, f, g, h, i, j, k, l, r, n, o, p, q, r, s, t, u, v, w, x, y, z, A, B, C, D, E, F, G, H, I, J, K, L, R, N, O, P, Q, R, S, T, U, V, W, X, Y, Z.....page 12
203	The indefinite article (a, an).....page 22
204	This is / Is this? / Yes, it is / No, it isn't.....page 29
205	Plural –s, -es, -ies. These are Are these ...? Yes, they are./No, they aren't.page 37
206	That is / Is that? / Yes, it is / No, it isn't. Those are / Are those? / Yes, they are / No, they aren't / What is this / that / it? / What are these / those / they?.....page 47
207	Numbers, one, two, three, ..., thirty, colours, black, white, etc, adjectives, fat, thin, etc.page 56
208	The definite article (the). There is/are Is/Are there ...? Yes/No, there is/are/isn't/aren't. Prepositions (on, in, under, behind). Where is/are ...?.....page 67
209	The verb TO BE.: I am, you are, he is, she is, it is, we are, you are, they are. Am I? Are you?, etc. I am not, You are not/aren't, etc.page 77
210	Possessive adjectives: my, your, his, her, its, our, your, their.page 87
211	The verb TO HAVE GOT: I/You/We/You/They have got, He/She/It has got. Have I/you/we/you/they got? I/You/We/You/They have not/haven't got.page 97
212	Present continuous. The verb TO BE + ...ING: I am / You are / He is / She is ? It is / We are / You are / They are playing. Am I / Are you / Is he ... / Are they playing? I am not / ... / They are not/aren't playing.page 105

unit 201

The alphabet a-l, A-L vocabulary – theory - examples

the alphabet a-l, A-L	
a	A
b	B
c	C
d	D
e	E
f	F
g	G
h	H
i	I
j	J
k	K
l	L
m	M
n	N
o	O
p	P
q	Q
r	R
s	S
t	T
u	U
v	V
w	W
x	X
y	Y
z	Z

λέξεις που αρχίζουν από a - l	
english	greek
airplane	αεροπλάνο
apple	μήλο
bear	αρκούδα
book	βιβλίο
carrot	καρότο
cat	γάτα
dog	σκύλος
duck	πάπια
egg	αυγό
elephant	ελέφαντας
fish	ψάρι
flower	λουλούδι
giraffe	καμηλοπάρδαλη
girl	κορίτσι
horse	άλογο
house	σπίτι
ice-cream	παγωτό
Indian	ινδιάνος
jar	βαζάκι γυάλινο
jungle	ζούγκλα
kangaroo	καγκουρώ
king	βασιλιάς
letter	γράμμα
lion	λιοντάρι

λέξεις που αρχίζουν από a - l	
greek	english
αεροπλάνο	
άλογο	
αρκούδα	
αυγό	
βαζάκι γυάλινο	
βασιλιάς	
βιβλίο	
γάτα	
γράμμα	
ελέφαντας	
ζούγκλα	
ινδιάνος	
καγκουρώ	
καμηλοπάρδαλη	
καρότο	
κορίτσι	
λιοντάρι	
λουλούδι	
μήλο	
παγωτό	
πάπια	
σκύλος	
σπίτι	
ψάρι	

λέξεις που αρχίζουν από
Α - Λ

ENGLISH	GREEK
AIRPLANE	ΑΕΡΟΠΛΑΝΟ
APPLE	ΜΗΛΟ
BEAR	ΑΡΚΟΥΔΑ
BOOK	ΒΙΒΛΙΟ
CARROT	ΚΑΡΟΤΟ
CAT	ΓΑΤΑ
DOG	ΣΚΥΛΟΣ
DUCK	ΠΑΠΙΑ
EGG	ΑΥΓΟ
ELEPHANT	ΕΛΕΦΑΝΤΑΣ
FISH	ΨΑΡΙ
FLOWER	ΛΟΥΛΟΥΔΙ
GIRAFFE	ΚΑΜΗΛΟΠΑΡΔΑΛΗ
GIRL	ΚΟΡΙΤΣΙ
HORSE	ΑΛΟΓΟ
HOUSE	ΣΠΙΤΙ
ICE-CREAM	ΠΑΓΩΤΟ
INDIAN	ΙΝΔΙΑΝΟΣ
JAR	ΒΑΖΑΚΙ ΓΥΑΛΙΝΟ
JUNGLE	ΖΟΥΓΚΛΑ
KANGAROO	ΚΑΓΚΟΥΡΩ
KING	ΒΑΣΙΛΙΑΣ
LETTER	ΓΡΑΜΜΑ
LION	ΛΙΟΝΤΑΡΙ

λέξεις που αρχίζουν από
Α - Λ

GREEK	ENGLISH
ΑΕΡΟΠΛΑΝΟ	
ΑΛΟΓΟ	
ΑΡΚΟΥΔΑ	
ΑΥΓΟ	
ΒΑΖΑΚΙ ΓΥΑΛΙΝΟ	
ΒΑΣΙΛΙΑΣ	
ΒΙΒΛΙΟ	
ΓΑΤΑ	
ΓΡΑΜΜΑ	
ΕΛΕΦΑΝΤΑΣ	
ΖΟΥΓΚΛΑ	
ΙΝΔΙΑΝΟΣ	
ΚΑΓΚΟΥΡΩ	
ΚΑΜΗΛΟΠΑΡΔΑΛΗ	
ΚΑΡΟΤΟ	
ΚΟΡΙΤΣΙ	
ΛΙΟΝΤΑΡΙ	
ΛΟΥΛΟΥΔΙ	
ΜΗΛΟ	
ΠΑΓΩΤΟ	
ΠΑΠΙΑ	
ΣΚΥΛΟΣ	
ΣΠΙΤΙ	
ΨΑΡΙ	

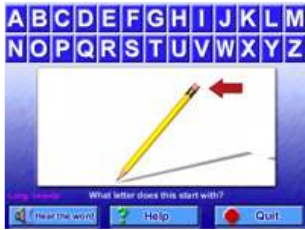
unit 201

The alphabet a-l, A-L

e-learning exercises

201a. ΚΑΝΤΕ ΚΛΙΚ ΣΤΟ ΓΡΑΜΜΑ ΠΟΥ ΛΕΙΠΕΙ ΑΠΟ ΤΗ ΣΕΙΡΑ.

1. abc ___ efghijkl .



- a d
 f b

2. a ___ cdefghijkl .



- d b
 f a

3. ab ___ defghijkl .



- c f
 d a

4. abcde ___ ghijkl .



- d c
 f a

5. abcd ___ fghijkl .



- a e
 c f

6. ___ bcdefghijkl .



- d a
 c f

7. abcdefgh ___ jkl .



- j g
 i l

8. abcdef ___ hijkl .



- c j
 g h

9. abcdefghij ___ l .



- c k
 h g

10. abcdefg ___ ijkl .



- c i
 h f

11. abcdefghi ___ kl .



- a j
 g c

12. abcdefghijk ___ .



- i l
 j h

201b. ΣΥΡΤΕ ΚΑΙ ΤΑΙΡΙΑΞΤΕ.

1.



Choice	Correct Match	Match
b		C
a		D
d		A
c		B

2.



Choice	Correct Match	Match
g		E
f		H
e		F
h		G

3.



Choice	Correct Match	Match
l		I
i		L
k		J
j		K

201c. ΣΥΡΤΕ ΚΑΙ ΒΑΛΤΕ ΣΤΗ ΣΩΣΤΗ ΣΕΙΡΑ.

1.



Choice	Correct Order
c	
a	
d	
b	

3.



Choice	Correct Order
i	
l	
j	
k	

5.



Choice	Correct Order
I	
F	
H	
G	

2.



Choice	Correct Order
f	
e	
h	
g	

4.



Choice	Correct Order
C	
B	
A	
D	

6.



Choice	Correct Order
L	
I	
K	
J	

201d. ΚΑΝΤΕ ΚΛΙΚ ΣΤΗ ΣΩΣΤΗ ΛΕΞΗ.

1.



- house indian
 jungle airplane

5.



- egg apple
 carrot ice-cream

9.



- bear cat
 giraffe elephant

2.



- house indian
 jungle airplane

6.



- apple egg
 carrot ice-cream

10.



- giraffe bear
 cat elephant

3.



- house jungle
 airplane indian

7.



- egg apple
 carrot ice-cream

11.



- elephant giraffe
 cat bear

4.



- indian house
 airplane jungle

8.



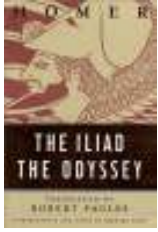
- carrot egg
 apple ice-cream

12.



- bear elephant
 giraffe cat

13.



()flower ()letter
()jar ()book

14.



()jar ()flower
()letter ()book

15.



()flower ()book
()jar ()letter

16.



()book ()flower
()letter ()jar

17.



()kangaroo ()dog
()horse ()duck

18.



()horse ()kangaroo
()duck ()dog

19.



()horse ()duck
()kangaroo ()dog

20.



()dog ()kangaroo
()horse ()duck

21.



()fish ()king
()kangaroo ()girl

22.



()kangaroo ()girl
()king ()fish

23.



()kangaroo ()girl
()fish ()king

24.



()fish ()lion
()kangaroo ()girl

201e. ΣΥΡΤΕ ΚΑΙ ΤΑΙΡΙΑΞΤΕ.

1.

Choice	Correct Match	Match
girl		σπίτι
airplane		παγωτό
ice-cream		αεροπλάνο
house		κορίτσι

2.

Choice	Correct Match	Match
egg		μήλο
carrot		λουλούδι
apple		καρότο
flower		αυγό

3.

Choice	Correct Match	Match
lion		αρκούδα
bear		ελέφαντας
giraffe		λιοντάρι
elephant		καμηλοπάρδαλη

4.

Choice	Correct Match	Match
fish		αεροπλάνο
girl		σπίτι
airplane		ψάρι
house		κορίτσι

5.

Choice	Correct Match	Match
dog		πάπια
duck		γάτα
cat		ινδιάνος
indian		σκύλος

6.

Choice	Correct Match	Match
king		άλογο
horse		βασιλιάς
kangaroo		ζούγκλα
jungle		καγκουρώ

201f. ΣΥΡΤΕ ΚΑΙ ΒΑΛΤΕ ΣΤΗ ΣΩΣΤΗ ΣΕΙΡΑ.

1.



Choice	Correct Order
pl	
a	
n	
e	
air	

2.



Choice	Correct Order
pp	
a	
l	
e	

3.



Choice	Correct Order
a	
r	
e	
b	

4.



Choice	Correct Order
oo	
k	
b	

5.



Choice	Correct Order
t	
o	
a	
c	
rr	

6.



Choice	Correct Order
c	
t	
a	

7.



Choice	Correct Order
c	
k	
u	
d	

8.



Choice	Correct Order
g	
o	
d	

9.



Choice	Correct Order
t	
eph	
el	
a	
n	

10.



Choice	Correct Order
gg	
e	

11.



Choice	Correct Order
h	
s	
i	
f	

12.



Choice	Correct Order
e	
w	
o	
r	
fl	

13.



Choice	Correct Order
l	
i	
r	
g	

14.



Choice	Correct Order
a	
g	
i	
rr	
fe	

15.



Choice	Correct Order
o	
e	
s	
r	
h	

16.



Choice	Correct Order
e	
o	
s	
u	
h	

17.



Choice	Correct Order
cr	
ice	
m	
ea	

18.



Choice	Correct Order
in	
a	
di	
n	

19.



Choice	Correct Order
r	
a	
j	

20.



Choice	Correct Order
g	
u	
le	
n	
j	

21.



Choice	Correct Order
r	
ka	
oo	
n	
ga	

22.



Choice	Correct Order
n	
k	
g	
i	

23.



Choice	Correct Order
o	
n	
l	
i	

24.



Choice	Correct Order
et	
r	
te	
l	

unit 202
The alphabet m-z, M-Z
vocabulary – theory - examples

the alphabet m-z, M-Z	
a	A
b	B
c	C
d	D
e	E
f	F
g	G
h	H
i	I
j	J
k	K
l	L
m	M
n	N
o	O
p	P
q	Q
r	R
s	S
t	T
u	U
v	V
w	W
x	X
y	Y
z	Z

λέξεις που αρχίζουν από m - z	
english	greek
milk	γάλα
mouse	ποντίκι
nest	φωλιά
nose	μύτη
octopus	χταπόδι
orange	πορτοκάλι
penguin	πιγκουίνος
pig	γουρούνι
queen	βασίλισσα
question	ερωτηματικό
rabbit	κουνέλι
ring	δαχτυλίδι
ship	καράβι
snake	φίδι
tiger	τίγρης
train	τρένο
umbrella	ομπρέλα
unicorn	μονόκερος
van	φορτηγάκι
violin	βιολί
watch	ρολόι χεριού
woman	γυναίκα
x-ray	ακτινογραφία
xylophone	ξυλόφωνο
yacht	γιωτ,θαλαμηγός
yo-yo	γιο-γιο
zebra	ζέβρα
zipper	φερμουάρ

λέξεις που αρχίζουν από m - z	
greek	english
ακτινογραφία	
βασίλισσα	
βιολί	
γάλα	
γιο-γιο	
γιωτ,θαλαμηγός	
γουρούνι	
γυναίκα	
δαχτυλίδι	
ερωτηματικό	
ζέβρα	
καράβι	
κουνέλι	
μονόκερος	
μύτη	
ξυλόφωνο	
ομπρέλα	
πιγκουίνος	
ποντίκι	
πορτοκάλι	
ρολόι χεριού	
τίγρης	
τρένο	
φερμουάρ	
φίδι	
φορτηγάκι	
φωλιά	
χταπόδι	

λέξεις που αρχίζουν από
M-Z

english	greek
MILK	ΓΑΛΑ
MOUSE	ΠΟΝΤΙΚΙ
NEST	ΦΩΛΙΑ
NOSE	ΜΥΤΗ
OCTOPUS	ΧΤΑΠΟΔΙ
ORANGE	ΠΟΡΤΟΚΑΛΙ
PENGUIN	ΠΙΓΚΟΥΙΝΟΣ
PIG	ΓΟΥΡΟΥΝΙ
QUEEN	ΒΑΣΙΛΙΣΣΑ
QUESTION MARK	ΕΡΩΤΗΜΑΤΙΚΟ
RABBIT	ΚΟΥΝΕΛΙ
RING	ΔΑΧΤΥΛΙΔΙ
SHIP	ΚΑΡΑΒΙ
SNAKE	ΦΙΔΙ
TIGER	ΤΙΓΡΗΣ
TRAIN	ΤΡΕΝΟ
UMBRELLA	ΟΜΠΡΕΛΑ
UNICORN	ΜΟΝΟΚΕΡΟΣ
VAN	ΦΟΡΤΗΓΑΚΙ
VIOLIN	ΒΙΟΛΙ
WATCH	ΡΟΛΟΙ ΧΕΡΙΟΥ
WOMAN	ΓΥΝΑΙΚΑ
X-RAY	ΑΚΤΙΝΟΓΡΑΦΙΑ
XYLOPHONE	ΞΥΛΟΦΩΝΟ
YACHT	ΓΙΩΤ, ΘΑΛΑΜΗΓΟΣ
YO-YO	ΓΙΟ-ΓΙΟ
ZEBRA	ZEBRA
ZIPPER	ΦΕΡΜΟΥΑΡ

λέξεις που αρχίζουν από
M-Z

greek	english
ΑΚΤΙΝΟΓΡΑΦΙΑ	
ΒΑΣΙΛΙΣΣΑ	
ΒΙΟΛΙ	
ΓΑΛΑ	
ΓΙΟ-ΓΙΟ	
ΓΙΩΤ, ΘΑΛΑΜΗΓΟΣ	
ΓΟΥΡΟΥΝΙ	
ΓΥΝΑΙΚΑ	
ΔΑΧΤΥΛΙΔΙ	
ΕΡΩΤΗΜΑΤΙΚΟ	
ZEBRA	
ΚΑΡΑΒΙ	
ΚΟΥΝΕΛΙ	
ΜΟΝΟΚΕΡΟΣ	
ΜΥΤΗ	
ΞΥΛΟΦΩΝΟ	
ΟΜΠΡΕΛΑ	
ΠΙΓΚΟΥΙΝΟΣ	
ΠΟΝΤΙΚΙ	
ΠΟΡΤΟΚΑΛΙ	
ΡΟΛΟΙ ΧΕΡΙΟΥ	
ΤΙΓΡΗΣ	
ΤΡΕΝΟ	
ΦΕΡΜΟΥΑΡ	
ΦΙΔΙ	
ΦΟΡΤΗΓΑΚΙ	
ΦΩΛΙΑ	
ΧΤΑΠΟΔΙ	

unit 202

The alphabet m-z, M-Z

e-learning exercises

202a. ΚΑΝΤΕ ΚΛΙΚ ΣΤΟ ΓΡΑΜΜΑ ΠΟΥ ΛΕΙΠΕΙ ΑΠΟ ΤΗ ΣΕΙΡΑ.

1. abcdefghijkl ___ nopqr



j m
 n h

2. abcdefghijklmnopq ___



n r
 i e

3. abcdefghijklm ___ opqr



n r
 h m

4. abcdefghijklmnop ___ r



o q
 p g

5. abcdefghijklmn ___ pqr



e r
 q o

6. abcdefghijklmno ___ qr



g p
 q e

7. abcdefghijklmnopqrs ___ uvwxyz



f r
 e t

8. abcdefghijklmnopqrstuv wxy ___



z c
 j i

9. abcdefghijklmnopqr ___ tuvwxzy



c s
 z j

10. abcdefghijklmnopqrstuv wx ___ z



ABGDEEFGHI
JKLLMNOPQ
RSTUVWXYZ
a g m n o p r s u v
b d f g h i k l t y x z
1 2 3 4 5 6 7 8 9 0

y u
 v i

11. abcdefghijklmnopqrstuv w ___ yz

ABCDE
FGHIK
LMNOP
QRSTU
VWXYZ

x c
 w n

12. abcdefghijklmnopqrst
 ___vwxyz



()u ()n
 ()v ()h

13. abcdefghijklmnopqrstuv
 ___xyz



()n ()w
 ()r ()m

14. abcdefghijklmnopqrstu
 ___wxyz



()v ()u
 ()m ()n

202b. ΣΥΡΤΕ ΚΑΙ ΤΑΙΡΙΑΕΤΕ.

1.



Choice	Correct Match	Match
o		P
n		O
p		N
m		M

2.



Choice	Correct Match	Match
u		Q
r		S
s		R
q		T
t		U

3.



Choice	Correct Match	Match
x		W
w		X
y		Y
z		Z
v		V

202c. ΣΥΡΤΕ ΚΑΙ ΒΑΛΤΕ ΣΤΗ ΣΩΣΤΗ ΣΕΙΡΑ .

1.



Choice	Correct Order
p	
o	
n	
m	

2.



Choice	Correct Order
t	
s	
q	
u	
r	

3.



Choice	Correct Order
w	
v	
x	
z	
y	

4.



Choice	Correct Order
P	
N	
O	
M	

5.



Choice	Correct Order
Q	
S	
T	
U	
R	

6.



Choice	Correct Order
Y	
X	
W	
V	
Z	

202d. ΚΑΝΤΕ ΚΛΙΚ ΣΤΗ ΣΩΣΤΗ ΕΠΙΛΟΓΗ.

1.



- octopus pig
- mouse penguin

4.



- mouse octopus
- penguin pig

7.



- milk orange
- nose nest

2.



- penguin pig
- mouse octopus

5.



- milk nest
- orange nose

8.



- orange milk
- nose nest

3.



- pig mouse
- penguin octopus

6.



- orange nest
- milk nose

9.



- ring watch
- umbrella question mark

10.



()watch ()ring
()umbrella ()question mark

11.



()umbrella ()question mark
()ring ()watch

12.



()watch ()ring
()umbrella ()question mark

13.



()rabbit ()ship
()train ()queen

14.



()queen ()ship
()rabbit ()train

15.



()queen ()train
()rabbit ()ship

16.



()train ()rabbit
()queen ()ship

17.



()zebra ()tiger
()snake ()unicorn

18.



()zebra ()snake
()unicorn ()tiger

19.



()unicorn ()zebra
()tiger ()snake

20.



()tiger ()snake
()unicorn ()zebra

21.



()xylophone ()zipper
()yo-yo ()violin

22.



()zipper ()yo-yo
()violin ()xylophone

23.



()zipper ()yo-yo
()xylophone ()violin

24.



()xylophone ()yo-yo
()violin ()zipper

25.



woman yacht
 x-ray van

27.



yacht woman
 van x-ray

28.



x-ray woman
 van yacht

26.



x-ray woman
 van yacht

202e. ΣΥΡΤΕ ΚΑΙ ΤΑΙΡΙΑΞΤΕ.

1.

Choice	Correct Match	Match
milk		φωλιά
mouse		μύτη
nose		ποντίκι
nest		γάλα

5.

Choice	Correct Match	Match
violin		ομπρέλα
umbrella		μονόκερος
unicorn		φορτηγάκι
van		βιολί

2.

Choice	Correct Match	Match
pig		χταπόδι
orange		πιγκούνος
octopus		πορτοκάλι
penguin		γουρούνι

6.

Choice	Correct Match	Match
x-ray		ρολόι χεριού
watch		ακτινογραφία
xylophone		γυναίκα
woman		ξυλόφωνο

3.

Choice	Correct Match	Match
ring		βασίλισσα
question mark		δαχτυλίδι
rabbit		ερωτηματικό
queen		κουνέλι

7.

Choice	Correct Match	Match
zipper		ζέβρα
yacht		φερμουάρ
zebra		γιο-γιο
yo-yo		γιωτ, θαλαμηγός

4.

Choice	Correct Match	Match
train		φίδι
ship		τίγρης
snake		τρένο
tiger		καράβι

202f. ΣΥΡΤΕ ΚΑΙ ΒΑΛΤΕ ΣΤΗ ΣΩΣΤΗ ΣΕΙΡΑ .

1.



Choice	Correct Order
e	
o	
m	
u	
s	

2.



Choice	Correct Order
k	
l	
m	
i	

3.



Choice	Correct Order
n	
t	
s	
e	

4.



Choice	Correct Order
n	
s	
e	
o	

5.



Choice	Correct Order
to	
oc	
s	
p	
u	

6.



Choice	Correct Order
e	
o	
r	
a	
ng	

7.



Choice	Correct Order
i	
p	
g	

8.



Choice	Correct Order
e	
ng	
in	
u	
p	

9.



Choice	Correct Order
m	
a	
question-	
r	
k	

10.



Choice	Correct Order
n	
ee	
u	
q	

11.



Choice	Correct Order
t	
r	
bb	
a	
i	

12.



Choice	Correct Order
i	
n	
g	
r	

13.



Choice	Correct Order
n	
s	
a	
k	
e	

14.



Choice	Correct Order
h	
s	
i	
p	

15.



Choice	Correct Order
g	
t	
e	
r	
i	

16.



Choice	Correct Order
i	
n	
t	
r	
a	

17.



Choice	Correct Order
i	
c	
o	
rn	
un	

18.



Choice	Correct Order
ll	
br	
e	
um	
a	

19.



Choice	Correct Order
n	
li	
vi	
o	

20.



Choice	Correct Order
a	
n	
v	

21.



Choice	Correct Order
h	
c	
w	
t	
a	

22.



Choice	Correct Order
o	
m	
n	
w	

a	
---	--

23.



Choice	Correct Order
lo	
pho	
ne	
y	
x	

24.



Choice	Correct Order
a	
x-	
r	
y	

25.



Choice	Correct Order
yo	
y	
o-	

26.



Choice	Correct Order
t	
h	
y	
a	
c	

27.



Choice	Correct Order
r	
e	
i	
z	
pp	

28.



Choice	Correct Order
a	
b	
e	
r	
z	

unit 203

The indefinite article (a, an) vocabulary – theory - examples

english	greek
airplane	αεροπλάνο
apple	μήλο
bear	αρκούδα
book	βιβλίο
boy	αγόρι
car	αυτοκίνητο
carrot	καρότο
cat	γάτα
dog	σκύλος
duck	πάπια
egg	αυγό
elephant	ελέφαντας
fish	ψάρι
flower	λουλούδι
football	μπάλα ποδοσφαίρου
giraffe	καμηλοπάρδαλη
girl	κορίτσι
horse	άλογο
house	σπίτι
ice-cream	παγωτό
indian	ινδιάνος
jar	βαζάκι γυάλινο
jungle	ζούγκλα
kangaroo	καγκουρώ
king	βασιλιάς
letter	γράμμα
lion	λιοντάρι
milk	γάλα
mouse	ποντίκι
nest	φωλιά
nose	μύτη
octopus	χταπόδι
orange	πορτοκάλι
pen	στυλό
penguin	πιγκουίνος

pig	γουρούνι
queen	βασίλισσα
question mark	ερωτηματικό
rabbit	κουνέλι
ring	δαχτυλίδι
ship	καράβι
snake	φίδι
tiger	τίγρης
train	τρένο
umbrella	ομπρέλα
unicorn	μονόκερος
van	φορτηγάκι κλειστό
violin	βιολί
watch	ρολόι χεριού
woman	γυναίκα
x-ray	ακτινογραφία
xylophone	ξυλόφωνο
yacht	γιωτ, θαλαμηγός
yo-yo	γιο-γιο
zebra	ζέβρα
zipper	φερμουάρ

greek	english
αγόρι	
αεροπλάνο	
ακτινογραφία	
άλογο	
αρκούδα	
αυγό	
αυτοκίνητο	
βαζάκι γυάλινο	
βασιλιάς	
βασίλισσα	
βιβλίο	
βιολί	
γάλα	

γάτα	
γιο-γιο	
γιωτ, θαλαμηγός	
γουρούνι	
γράμμα	
γυναίκα	
δαχτυλίδι	
ελέφαντας	
ερωτηματικό	
ζέβρα	
ζούγκλα	
ινδιάνος	
καγκουρώ	
καμηλοπάρδαλη	
καράβι	
καρότο	
κορίτσι	
κουνέλι	
λιοντάρι	
λουλουδί	
μήλο	
μονόκερος	
μπάλα ποδοσφαίρου	
μύτη	
ξυλόφωνο	
ομπρέλα	
παγωτό	
πάπια	
πιγκουίνος	
ποντίκι	
πορτοκάλι	
ρολόι χεριού	
σκύλος	
σπίτι	
στυλό	
τίγρης	
τρένο	
φερμουάρ	
φίδι	
φορτηγάκι κλειστό	
φωλιά	
χταπόδι	

ψάρι

a, an

Βάζουμε A (ένας, μία, ένα)
μπροστά από λέξεις που αρχίζουν με σύμφωνο.

Σύμφωνα: b, c, d, f, g, h, j, k, l, m, n, p, q, r, s, t, v, w, x, y, z

Βάζουμε AN (ένας, μία, ένα)
μπροστά από λέξεις που αρχίζουν με φωνήεν.

Φωνήεντα: a, e, i, o, u

an airplane	a mouse
an apple	a nest
a bear	a nose
a book	an octopus
a carrot	an orange
a cat	a pig
a car	a penguin
a duck	a queen
a dog	a rabbit
an elephant	a ring
an egg	a snake
a flower	a ship
a football	a tiger
a giraffe	a train
a girl	a unicorn (ήχος συμφώνου)
a house	an umbrella
a horse	a violin
an ice-cream	a watch
an indian	a woman
a jungle	a xylophone
a jar	an x-ray (ήχος φωνήεντος)
a kangaroo	a yo-yo
a king	a yacht
a lion	a zipper
a letter	a zebra

unit 203
The indefinite article (a, an)
e-learning exercises

203a. ΚΑΝΤΕ ΚΛΙΚ ΣΤΗ ΣΩΣΤΗ ΕΠΙΛΟΓΗ.

1. a _____

indian / lion / umbrella / x-ray



2. an _____

boy / car / apple / dog



3. a _____

egg / umbrella / x-ray / kangaroo



4. an _____

flower / egg / football / girl



5. a _____

octopus / umbrella / x-ray / bear



6. an _____

horse / jar / indian / king



7. a _____

apple / book / octopus / umbrella



8. an _____

letter / mouse / orange / nose



9. a _____

ice-cream / carrot / octopus / x-ray



10. an _____

penguin / queen / airplane / ring



11. a _____

elephant / ice-cream / cat / octopus



12. an _____

ship / train / unicorn / elephant



13. a _____

duck / airplane / elephant / ice-cream



14. an _____

violin / ice-cream / woman / xylophone



15. a _____

orange / airplane / x-ray / fish



16. an _____

zebra / octopus / zipper / yo-yo



17. a _____

giraffe / indian / orange / airplane



18. an _____

watch / tiger / umbrella / snake



19. a _____

egg / indian / orange / house



20. an _____

rabbit / x-ray / pig / nest



21. a _____

jungle / apple / egg / indian



203b. ΚΑΝΤΕ ΚΛΙΚ ΣΤΗ ΣΩΣΤΗ ΕΠΙΛΟΓΗ.

- | | | |
|--------------------------------|------------------------------|--------------------------------|
| 1. | 4. | 7. |
| () a zebra () an zebra | () a giraffe () an giraffe | () a house () an house |
| 2. | 5. | 8. |
| () a airplane () an airplane | () a carrot () an carrot | () a boy () an boy |
| 3. | 6. | 9. |
| () a football () an football | () a girl () an girl | () a elephant () an elephant |

10.

() a cat () an cat

11.

() a apple () an apple

12.

() a jungle () an jungle

13.

() a dog () an dog

14.

() a egg () an egg

15.

() a fish () an fish

16.

() a book () an book

17.

() a octopus () an octopus

18.

() a flower () an flower

19.

() a horse () an horse

203c. ΚΑΝΤΕ ΚΛΙΚ ΣΤΗ ΣΩΣΤΗ ΕΠΙΛΟΓΗ.

1.

() a ice-cream () an ice-cream

2.

() a bear () an bear

3.

() a car () an car

4.

() a duck () an duck

5.

() a indian () an indian

6.

() a jar () an jar

7.

() a orange () an orange

8.

() a pig () an pig

9.

() a ring () an ring

10.

() a snake () an snake

11.

() a train () an train

12.

() a unicorn () an unicorn

13.

() a nose () an nose

14.

() a zipper () an zipper

15.

() a tiger () an tiger

16.

() a penguin () an penguin

17.

() a umbrella () an umbrella

18.

() a queen () an queen

19.

() a rabbit () an rabbit


20.


() a ship () an ship


203d. ΚΑΝΤΕ ΚΛΙΚ ΣΤΗ ΣΩΣΤΗ ΕΠΙΛΟΓΗ.


1. () a violin () an violin
2. () a watch () an watch
3. () a letter () an letter
4. () a mouse () an mouse
5. () a nest () an nest
6. () a woman () an woman
7. () a xylophone () an xylophone
8. () a kangaroo () an kangaroo
9. () a x-ray () an x-ray
10. () a yo-yo () an yo-yo
11. () a king () an king
12. () a yacht () an yacht
13. () a lion () an lion

203e. ΚΑΝΤΕ ΚΛΙΚ ΣΤΗ ΣΩΣΤΗ ΕΠΙΛΟΓΗ.

1. 
() an apple () a boy
() a carrot () an airplane

3. 
() a car () a train
() an airplane () a yacht

2. 
() an orange () a football
() an egg () an apple

4. 
() a van () a book
() a pen () a watch

ΣΥΡΤΕ ΚΑΙ ΒΑΛΤΕ ΣΤΗ ΣΩΣΤΗ ΣΕΙΡΑ.

5.



Choice	Correct Order
y	
b	
o	

6.



Choice	Correct Order
oo	
ll	
f	
ba	
t	

7.



Choice	Correct Order
r	
a	
c	

8.



Choice	Correct Order
e	
n	
p	

ΣΥΡΤΕ ΚΑΙ ΤΑΙΡΙΑΞΤΕ.

9.

Choice	Correct Match	Match
football		αυτοκίνητο
car		αγόρι
pen		μπάλα ποδοσφαίρου
boy		στυλό

unit 204

This is a/an Is this a/an ...? Yes, it is. / No, it isn't. vocabulary – theory - examples

english	greek
airbed	φουσκωτό στρώμα
bed	κρεβάτι
boat	βάρκα
bus	λεωφορείο
car	αυτοκίνητο
crocodile	κροκόδειλος
deckchair	ξαπλωτή πολυθρόνα
fish	ψάρι
football	μπάλα ποδοσφαίρου
hat	καπέλο
jacket	σακάκι
jumper	πουλόβερ
No	Όχι
octopus	χταπόδι
This	Αυτός, αυτή, αυτό
umbrella	ομπρέλλα
Yes	Ναι

greek	english
αυτοκίνητο	
Αυτός, αυτή, αυτό	
βάρκα	
καπέλο	
κρεβάτι	
κροκόδειλος	
λεωφορείο	
μπάλα ποδοσφαίρου	
Ναι	
ξαπλωτή πολυθρόνα	
ομπρέλλα	
Όχι	
πουλόβερ	
σακάκι	
φουσκωτό στρώμα	
χταπόδι	
ψάρι	

this is a/an it is a/an it's a/an ...

Η λέξη THIS (αυτός, αυτή, αυτό) χρησιμοποιείται όταν δείχνουμε, συνήθως κάτι κοντά μας.

Η λέξη IT (αυτός, αυτή, αυτό) χρησιμοποιείται όταν δεν δείχνουμε, ή όταν μιλάμε για κάτι γενικά.

Η λέξη IS (είναι) χρησιμοποιείται στον ενικό. Δεν ξεχνάμε μετά το THIS IS ή IT IS να βάζουμε A, AN μπροστά από το ουσιαστικό που ακολουθεί. Ο σύντομος τύπος του IT IS είναι IT'S.

Τις λέξεις ΑΥΤΟΣ, ΑΥΤΗ, ΑΥΤΟ (IT) και ΕΝΑΣ, ΜΙΑ, ΕΝΑ (A, AN) στα Ελληνικά συνήθως τις παραλείπουμε. Στα Αγγλικά όμως δεν πρέπει να τις παραλείπουμε.

This is a fish.	Αυτό είναι ένα ψάρι.
It is a fish.	Είναι ψάρι.
This is an octopus.	Αυτό είναι ένα χταπόδι.
It is an octopus.	Είναι χταπόδι.

This is a hat.	Αυτό είναι ένα καπέλο.
It's a hat.	Είναι καπέλο.
This is a boat.	Αυτή είναι μία βάρκα.
It is a boat.	Είναι βάρκα.
This is an elephant.	Αυτός είναι ένας ελέφαντας.
It is an elephant.	Είναι ελέφαντας.
This is a jumper.	Αυτό είναι ένα πουλόβερ.
It's a jumper.	Είναι πουλόβερ.
This is an airbed.	Αυτό είναι ένα φουσκωτό στρώμα.
It is an airbed.	Είναι ένα φουσκωτό στρώμα

Is this a/an ... ? Yes, it is. No, it isn't. No, it isn't a/an It is a/an

Για να ρωτήσουμε αντιστρέφουμε το THIS IS που γίνεται IS THIS? Απαντάμε με YES, IT IS ή NO, IT ISN'T ή NO, IT IS NOT.	
A. Is this a crocodile? B. Yes, it is.	A. Είναι αυτός ένας κροκόδειλος; B. Ναι, είναι.
A. Is this a crocodile? B. No, it isn't.	A. Είναι αυτός ένας κροκόδειλος; B. Όχι, δεν είναι.
A. Is this a crocodile? B. No, it isn't a crocodile. It's an octopus.	A. Είναι αυτός ένας κροκόδειλος; B. Όχι, δεν είναι κροκόδειλος. Είναι χταπόδι.
A. Is this a snake? B. Yes, it is.	A. Είναι αυτό ένα φίδι; B. Ναι, είναι.
A. Is this a snake? B. No, it isn't.	A. Είναι αυτό ένα φίδι; B. Όχι, δεν είναι.
A. Is this a snake? B. No, it isn't a snake. It's a fish.	A. Είναι αυτό ένα φίδι; B. Όχι, δεν είναι φίδι. Είναι ψάρι.

unit 204

This is a/an Is this a/an ...? Yes, it is. / No, it isn't. e-learning exercises

204a. ΚΑΝΤΕ ΚΛΙΚ ΣΤΗ ΣΩΣΤΗ ΕΠΙΛΟΓΗ.

1.
A. _____ an umbrella?
B. No, it isn't an umbrella. It is a hat.



- Is this Is
 This is It's

2.
A. Is this a jumper?
B. _____, it isn't a jumper. It's a jacket.



- not No
 Yes This

3.
A. Is this _____?
B. No, it is not a fish. It is an octopus.



- a fish not fish
 fish it a fish

4.
A. Is this an airbed?
B. No, _____ not an airbed. It is a deckchair.



- is it it
 is it is

5.
A. Is this an ice cream?
B. No, it _____ an ice cream. It is a boat.



- is not not
 no not is

6.
A. Is this an egg?
B. No, it _____ an egg. It is a football.



- is isn't
 not is no

7.
A. Is this a bus?
B. No, it is _____ bus. It is a car.



- a not a
 not n't

8.
A. Is this an orange?
B. No, it is not an orange. _____ is an apple.



- It Not
 Yes It's

9.
A. _____ this an egg?
B. No, it is not an egg. It is an ice cream.



- It's It
 Yes Is

10.
 A. Is _____ bed?
 B. No, it is not a bed. It is an airbed.



- this a a
 this it

11.
 A. Is this a girl?
 B. No, _____ a girl. It is a woman.



- it not it is not
 isn't is not

12.
 A. Is this a _____?
 B. No, it is not a van. It is a train.



- bus van
 train car

13.
 A. Is this a violin?
 B. No, it is not _____. It is a watch.



- a a watch
 violin a violin

14.
 A. Is this a tiger?
 B. No, it is _____ tiger. It is a unicorn.



- not a not
 no a a

15.
 A. Is this a ship?
 B. No, it is not a ship. _____ a boat.



- It It is
 Is Is it

16.
 A. Is this a snake?
 B. _____, it is.



- This Yes
 Snake No

17.
 A. Is this a rabbit?
 B. Yes, _____



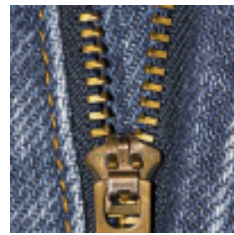
- it is is
 it is it

18.
 A. _____ a pig?
 B. Yes, it is.



- Is this It is
 Is This is

19.
 A. Is this a ring?
 B. No, it _____



- not is not
 is no not is

20.
 A. Is this a penguin?
 B. No, it _____.



- not not is
 is no isn't

204b. ΣΥΠΤΕ ΚΑΙ ΤΑΙΡΙΑΞΤΕ.

1.

Choice	Correct Match	Match
Is this a jumper?		No, it is not an airbed. It is a deckchair.
Is this an ice cream?		No, it isn't an umbrella. It is a hat
Is this a fish?		No, it isn't a jumper. It's a jacket.
Is this an umbrella?		No, it is not a fish. It is an octopus.
Is this an airbed?		No, it is not an ice cream. It is a boat.

2.

Choice	Correct Match	Match
Is this a girl?		No, it is not a bus. It is a car.
Is this an egg?		No, it is not a bed. It is an airbed.
Is this a bed?		No, it is not an orange. It is an apple.
Is this a bus?		No, it is not a girl. It is a woman.
Is this an orange?		No, it is not an egg. It is a football.

3.

Choice	Correct Match	Match
Is this a violin?		No, it is not a ship. It is a boat.
Is this a ship?		No, it is not a van. It is a train.
Is this an egg?		No, it is not a tiger. It is a unicorn.
Is this a van?		No, it is not an egg. It is an ice cream.
Is this a tiger?		No, it is not a violin. It is a watch.

4.

Choice	Correct Match	Match
A. Is this a rabbit? B. _____ is.		this a
A. Is _____ pig? B. Yes, it is.		it is
A. Is this a penguin? B. No, _____ .		isn't
A. Is this a snake? B. Yes, _____ .		it isn't
A. Is this a ring? B. No, it _____ .		Yes, it

204c. ΣΥΡΤΕ ΚΑΙ ΒΑΛΤΕ ΣΤΗ ΣΩΣΤΗ ΣΕΙΡΑ .

1.



Choice	Correct Order
mouse	
Is	
this	
a	
?	

2.



Choice	Correct Order
is	
.	
a	
It	
cat	

3.



Choice	Correct Order
kangaroo.	
a	
isn't	
it	
No,	

4.



Choice	Correct Order
.	
It's	
giraffe	
a	

5.



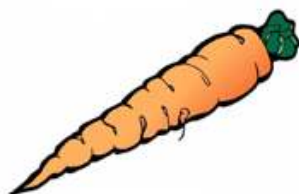
Choice	Correct Order
a lion.	
No,	
is	
it	
not	

6.



Choice	Correct Order
it	
an	
ice cream.	
No,	
isn't	

7.



Choice	Correct Order
a	
It	
is	
.	
carrot	

8.



Choice	Correct Order
isn't	
it	
.	
.	
No	

9.



Choice	Correct Order
.	
a nest	
No	
it isn't	
.	

10.



Choice	Correct Order
.	
is	
.	
Yes	
it	

204d. ΣΥΡΤΕ ΚΑΙ ΤΑΙΡΙΑΞΤΕ.

1.

Choice	Correct Match	Match
No, it is not a _____. It is a nest.		an
No, it is not an airbed. It _____ a jacket.		umbrella
Is this _____ fish?		hat
No, it is not an _____. It is a house.		a
Is this _____ octopus?		is

2.

Choice	Correct Match	Match
A. Is this _____ ice cream? B. No, it isn't.		this
A. Is this a fish? B. No, it is not a fish. _____ is an orange.		jumper
A. Is this a _____? B. Yes, it is.		octopus
A. Is _____ a deckchair? B. Yes, it is.		an
A. Is this an _____? B. No, it isn't.		It

3.

Choice	Correct Match	Match
A. Is this a giraffe? B. Yes, it _____.		it is
A. Is this a kangaroo? B. No, _____ not a kangaroo. It is a dog.		not
A. Is this _____ lion? B. Yes, it is.		it
A. Is this a tiger? B. No, it is _____ a tiger. It is a fish.		a
A. Is this a carrot? B. No, _____ isn't.		is

4.

Choice	Correct Match	Match
A. Is this an umbrella? B. _____ it isn't.		Yes,
A. Is this a hat? B. _____ it is.		isn't
A. Is this a jacket? B. No, _____.		it is
A. Is this a mouse? B. No, it _____ a mouse. It is a cat.		it isn't
A. Is this a jumper? B. Yes, _____.		No,

5.

Choice	Correct Match	Match
A. Is this _____ airbed? B. Yes, it is.		this
A. Is this _____ deckchair? B. No, it isn't.		Is this
A. Is _____ a football? B. Yes, it is.		This is
_____ a fish.		an
_____ an octopus?		a

204e. ΣΥΡΤΕ ΚΑΙ ΤΑΙΡΙΑΞΤΕ.

1.

Choice	Correct Match	Match
hat		σακάκι
octopus		ομπρέλλα
jumper		καπέλο
umbrella		πουλόβερ
jacket		χταπόδι

2.

Choice	Correct Match	Match
snake		ξαπλωτή πολυθρόνα
airbed		μπάλα ποδοσφαίρου
football		κροκόδειλος
deckchair		φίδι
crocodile		φουσκωτό στρώμα

3.

Choice	Correct Match	Match
This		Αυτό είναι
This is		Ναι
No		Όχι
Yes		Είναι αυτό ... ?
Is this ... ?		Αυτός/ή/ό

4.

Choice	Correct Match	Match
it isn't		Είναι ... ?
Is it ... ?		είναι
not		αυτό
it is		δεν
it		δεν είναι

unit 205

Plural (-s, -es, -ies). These are
Are these ...? Yes, they are. / No, they aren't.
vocabulary – theory - examples

english	greek
apples	μήλα
babies	μωρά
baby	μωρό
books	βιβλία
box	κουτί
boxes	κουτιά
brush	βούρτσα
brushes	βούρτσες
buses	λεωφορεία
card	κάρτα
dress	φόρεμα
dresses	φορέματα
houses	σπίτια
octopuses	χταπόδια
potato	πατάτα
potatoes	πατάτες
sandwich	σάντουιτς (ένα)
sandwiches	σάντουιτς (πολλά)
shoe	παπούτσι
shoes	παπούτσια
strawberries	φράουλες
strawberry	φράουλα
tomato	ντομάτα
tomatoes	ντομάτες
volleyball	μπάλα του βόλλευ
watches	ρολογια χεριού

greek	english
βιβλία	
βούρτσα	
βούρτσες	
κάρτα	
κουτί	
κουτιά	
λεωφορεία	
μήλα	
μπάλα του βόλλευ	
μωρά	
μωρό	
ντομάτα	
ντομάτες	
παπούτσι	
παπούτσια	
πατάτα	
πατάτες	
ρολογια χεριού	
σάντουιτς (ένα)	
σάντουιτς (πολλά)	
σπίτια	
φόρεμα	
φορέματα	
φράουλα	
φράουλες	
χταπόδια	

Plural (-s)

Ο πληθυντικός των ουσιαστικών (πρόσωπα, ζώα, πράγματα) γίνεται συνήθως με την κατάληξη - S στο τέλος της λέξης.

shoe	shoes
zebra	zebras
apple	apples
book	books
cat	cats
dog	dogs
elephant	elephants
egg	eggs
house	houses
lion	lions
pig	pigs
rabbit	rabbits

Plural (-es)

Στις λέξεις που τελειώνουν σε -s, -ss, sh, ch, -x, -o ο πληθυντικός γίνεται με την κατάληξη -es.

watch	watches
octopus	octopuses
bus	buses
brush	brushes
sandwich	sandwiches
box	boxes
tomato	tomatoes
potato	potatoes
dress	dresses

Plural (-ys, -ies)

Όταν μια λέξη τελειώνει σε φωνήεν και -Y τότε παίρνει κανονικά -S στον πληθυντικό. Όταν όμως τελειώνει σε σύμφωνο και -Y τότε φεύγει το -Y και η κατάληξη του πληθυντικού γίνεται -IES.

boy	boys
x-ray	x-rays
baby	babies
strawberry	strawberries

this – these, it – they, is – are

Ο πληθυντικός του THIS είναι THESE (=αυτοί, αυτές, αυτά).
Χρησιμοποιείται όταν δείχνουμε, συνήθως κάτι κοντά μας.
Ο πληθυντικός του IT είναι THEY (=αυτοί, αυτές, αυτά).
Χρησιμοποιείται όταν μιλάμε γενικά ή δεν δείχνουμε.
Ο πληθυντικός του IS είναι ARE (=είναι).

This is a boy.
These **are** boys.

Αυτό είναι ένα αγόρι.
Αυτά είναι αγόρια.

It is a boy.
They **are** boys.

Είναι αγόρι.
Είναι αγόρια.

This is a volleyball.
These **are** volleyballs.

Αυτή είναι μια μπάλα του βόλλευ.
Αυτές είναι μπάλες του βόλλευ.

It is a volleyball.
They **are** volleyballs.

Είναι μπάλα του βόλλευ.
Είναι μπάλες του βόλλευ.

This is a card.
These **are** cards.

Αυτό είναι μία κάρτα.
Αυτά είναι κάρτες.

It is a card.
They **are** cards.

Είναι κάρτα.
Είναι κάρτες.

These are Are these ...? they are = they're / are not = aren't

Για ερωτήσεις αντιστρέφουμε το THESE ARE που γίνεται ARE THESE?
Ο σύντομος τύπος του THEY ARE είναι THEY'RE.
Για αρνήσεις χρησιμοποιούμε τα NO, THEY ARE NOT ή NO, THEY AREN'T.

A. Is this a dog?
B. Yes, it is.

A. Είναι αυτό σκύλος;
B. Ναι, είναι.

A. Are these dogs?
B. Yes, they are.

A. Είναι αυτά σκύλοι;
B. Ναι, είναι.

A. Is it a girl?
B. No, it isn't.

A. Είναι αυτό κορίτσι;
B. Όχι, δεν είναι.

A. Are these girls?
B. No, they aren't.

A. Είναι αυτά κορίτσια;
B. Όχι, δεν είναι.

unit 205

Plural (-s, -es, -ies). These are Are these ...? Yes, they are. / No, they aren't. e-learning exercises

205a. ΚΑΝΤΕ ΚΛΙΚ ΣΤΗ ΣΩΣΤΗ ΕΠΙΛΟΓΗ.

1. This _____ an apple.



is are
 not it

2. It is _____ egg.



not an
 a n't

3. A. Is _____ a book?
B. Yes, it is.



these they
 this it's

4. A. Is this a cat?
B. No, it _____ .



not aren't
 not is isn't

5. A. Is this a lion?
B. No, it isn't a lion. _____ a pig.



It is They are
 It Is

6. These _____ rabbits.



are is
 they are is a

7. _____ are houses.



They It's
 It This

8. A. _____ elephants?
B. Yes, they are.



They are Is this an
 Are these Are

9. A. Are these watches?
B. No, they _____ .



are aren't
 not are isn't

10.
 A. Are these octopuses?
 B. No, _____ octopuses. They are crocodiles.



aren't they not
 it isn't an they aren't

11. _____ are buses.



These It's
 This It

12. They are _____ .



baby a baby
 babys babies

13.
 A. Are these strawberries?
 B. Yes, _____ .



are they are
 it is they

14.
 A. _____ houses?
 B. No, they aren't.



Are Is this
 They are Are these

15.
 A. Are these tomatoes?
 B. No, they aren't tomatoes.
 They are _____ .



potatoes a potato
 potato a potatoes

16. These are _____ .



a strawberry strawberries
 strawberry strawberrys

17. Are these _____ ?



boy a boy
 boys boies

18. They are _____ .



boxes boxs
 a box box

19. This is a _____ .



buses cats
 books bus

20. This is a card. These _____ books.



they are is
 are isn't

205b. ΣΥΡΤΕ ΚΑΙ ΤΑΙΡΙΑΞΤΕ.

1. ΕΝΙΚΟ ΜΕ ΠΛΥΘΥΝΤΙΚΟ

Choice	Correct Match	Match
It is a baby.		These are babies.
This is a baby.		Are they babies?
Is it a baby?		Are these babies?
Is this a baby?		They are babies.

2. ΕΝΙΚΟ ΜΕ ΠΛΥΘΥΝΤΙΚΟ

Choice	Correct Match	Match
It isn't a sandwich.		These are not sandwiches.
It is not a sandwich.		These aren't sandwiches.
This is not a sandwich.		They are not sandwiches.
This isn't a sandwich.		They aren't sandwiches.

3. ΚΑΤΑΦΑΣΗ ΜΕ ΕΡΩΤΗΣΗ

Choice	Correct Match	Match
They are buses.		Is it a bus?
This is a bus.		Are these buses?
These are buses.		Is this a bus?
It is a bus.		Are they buses?

4. ΚΑΤΑΦΑΣΗ ΜΕ ΑΡΝΗΣΗ

Choice	Correct Match	Match
They are brushes.		This isn't a brush.
It is a brush.		These are not brushes.
This is a brush.		They are not brushes.
These are brushes.		It isn't a brush.

5. ΕΡΩΤΗΣΗ ΜΕ ΑΡΝΗΣΗ

Choice	Correct Match	Match
Are these boxes?		It isn't a box.
Is it a box?		This is not a box.
Is this a box?		They are not boxes.
Are they boxes?		These are not boxes.

205c. ΣΥΡΤΕ ΚΑΙ ΒΑΛΤΕ ΣΤΗ ΣΩΣΤΗ ΣΕΙΡΑ .

1.

Choice	Correct Order
watch	
This	
is	
a	
.	

2.

Choice	Correct Order
is	
tomato.	
not	
This	
a	

3.

Choice	Correct Order
.	
shoe	
a	
isn't	
This	

4.

Choice	Correct Order
?	
Is	
potato	
this	
a	

5.

Choice	Correct Order
.	
are	
These	
dresses	

6.

Choice	Correct Order
are	
volleyballs	
.	
These	
not	

7.

Choice	Correct Order
cards	
These	
aren't	
.	

8.

Choice	Correct Order
shoes	
Are	
these	
?	

9.

Choice	Correct Order
is	
.	
It	
an	
apple	

10.

Choice	Correct Order
octopus.	
It	
not	
is	
an	

11.

Choice	Correct Order
.	
isn't	
bus	
a	
It	

12.

Choice	Correct Order
?	
brush	
a	
Is	
it	

13.

Choice	Correct Order
They	
are	
.	
sandwiches	

14.

Choice	Correct Order
are	
They	
not	
boxes	
.	

15.

Choice	Correct Order
aren't	
.	
They	
tomatoes	

16.

Choice	Correct Order
these	
Are	
?	
potatoes	

205d. ΣΥΡΤΕ ΚΑΙ ΤΑΙΡΙΑΞΤΕ.

1.

Choice	Correct Match	Match
these		είναι (ένα)
this		αυτά
are		αυτό
is		είναι (πολλά)

2.

Choice	Correct Match	Match
isn't		αυτό
they		δεν είναι (πολλά)
it		αυτά
aren't		δεν είναι (ένα)

3.

Choice	Correct Match	Match
houses		μήλα
shoes		παπούτσι
shoe		βιβλία
books		παπούτσια
apples		σπίτια

4.

Choice	Correct Match	Match
buses		χταπόδια
watches		βούρτσες
brush		ρολογια χεριού
brushes		λεωφορεία
octopuses		βούρτσα

5.

Choice	Correct Match	Match
box		σάντουιτς (πολλά)
tomato		κουτί
sandwiches		ντομάτα
boxes		σάντουιτς (ένα)
sandwich		κουτιά

6.

Choice	Correct Match	Match
tomatoes		φόρεμα
dresses		πατάτα
potato		πατάτες
dress		φορέματα
potatoes		ντομάτες

7.

Choice	Correct Match	Match
babies		φράουλα
baby		μωρά
strawberry		μωρό
strawberries		μπάλα βόλλευ
volleyball		φράουλες

8.

Choice	Correct Match	Match
octopuses		κάρτα
octopus		μπάλες βόλλευ
card		χταπόδι
volleyballs		κάρτες
cards		χταπόδια

205e. ΚΑΝΤΕ ΚΛΙΚ ΣΤΗ ΣΩΣΤΗ ΚΑΤΑΛΗΞΗ ΠΛΗΘΥΝΤΙΚΟΥ.

1. **strawberr-y**



()-ies ()-es

2. **dress-**



()-ies ()-es

3. **rabbit-**



()-es ()-s

4. **bab-y**



()-ies ()-es

5. **potato-**



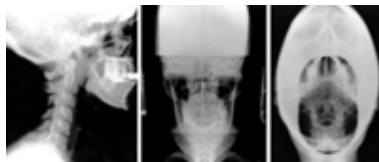
()-ies ()-es

6. **pig-**



()-es ()-s

7. **x-ray-**



()-es ()-s

8. **tomato-**



()-es ()-ies

9. **lion-**



()-es ()-s

10. **bo-y**



()-ies ()-ys

11. **box-**



()-es ()-ies

12. **hous-e**



()-ies ()-es

13. sandwich-



()-ies ()-es

14. egg-



()-es ()-s

15. brush-



()-ies ()-es

16. elephant-



()-es ()-s

17. bus-



()-es ()-ies

18. dog-



()-s ()-es

19. octopus-



()-es ()-ies

20. cat-



()-es ()-s

21. watch-



()-s ()-es

22. book-



()-s ()-es

23. apple-



()-es ()-s

24. zebra-



()-s ()-es

25. sho-e



()-ies ()-es

26. card-



()-es ()-s

unit 206

That is a/an Is that a/an ...? Yes, it is. / No, it isn't.
Those are Are those ...? Yes, they are. / No, they aren't.
What is this/that/it? What are these/those they?
vocabulary – theory - examples

english	greek
box	κουτί
boxes	κουτιά
computer	υπολογιστής
computers	υπολογιστές
dresses	φορέματα
lion	λιοντάρι
monkey	πίθηκος
monkeys	πίθηκοι
motorbike	μοτοποδήλατο
motorbikes	μοτοποδήλατα
octopuses	χταπόδια
policeman	αστυνομικός
rabbit	κουνέλι
taxi	ταξί (ένα)
taxis	ταξί (πολλά)
tiger	τίγρης
tomatoes	ντομάτες
zebras	ζέβρες

greek	english
αστυνομικός	
ζέβρες	
κουνέλι	
κουτί	
κουτιά	
λιοντάρι	
μοτοποδήλατα	
μοτοποδήλατο	
ντομάτες	
πίθηκοι	
πίθηκος	
ταξί (ένα)	
ταξί (πολλά)	
τίγρης	
υπολογιστές	
υπολογιστής	
φορέματα	
χταπόδια	

that, those

Η λέξη **THAT** (εκείνος, εκείνη, εκείνο) χρησιμοποιείται όταν δείχνουμε κάτι, συνήθως μακριά μας.
Ο πληθυντικός της είναι **THOSE** (εκείνοι, εκείνες, εκείνα).
Στη σύνταξη χρησιμοποιούνται όπως οι **THIS, THESE**.

That is a baby.	Εκείνο είναι ένα μωρό.
A. Is that a brush? B. Yes, it is.	A. Είναι εκείνη μία βούρτσα; B. Ναι, είναι.
A. Is that an airbed? B. No, it isn't.	A. Είναι εκείνο ένα φουσκωτό στρώμα; B. Όχι, δεν είναι.
A. Is that a computer? B. No, it isn't a computer. It is a book.	A. Είναι εκείνο υπολογιστής; Όχι, δεν είναι υπολογιστής. Είναι βιβλίο.
Those are tomatoes.	Εκείνες είναι ντομάτες.
A. Are those boxes? B. Yes, they are.	A. Είναι εκείνα κουτιά; B. Ναι, είναι.
A. Are those cards? B. No, they aren't.	A. Είναι εκείνες κάρτες; B. Όχι, δεν είναι.
A. Are those zebras? B. No, they aren't zebras. They are horses.	A. Είναι εκείνες ζέβρες; B. Όχι, δεν είναι ζέβρες. Είναι άλογα.

what

Η λέξη **WHAT** (τι) χρησιμοποιείται για να ρωτήσουμε τι είναι κάτι στον ενικό και τον πληθυντικό.

A. What is this? B. It is a volleyball.	A. Τι είναι αυτή; B. Είναι μπάλα του βόλλευ.
A. What is that? B. It is a jumper.	A. Τι είναι εκείνο; B. Είναι πουλόβερ.
A. What is it? B. It is a kite.	A. Τι είναι; B. Είναι χαρταετός.
A. What are these? B. They are rabbits.	A. Τι είναι αυτά; B. Είναι κουνέλια.
A. What are those? B. They are motorbikes.	A. Τι είναι εκείνα; B. Είναι μοτοποδήλατα.
A. What are they? B. They are computers.	A. Τι είναι; B. Είναι υπολογιστές.

unit 206

That is a/an Is that a/an ...? Yes, it is. / No, it isn't.
Those are Are those ...? Yes, they are. / No, they aren't.
What is this/that/it? What are these/those they?

e-learning exercises

206a. ΚΑΝΤΕ ΚΛΙΚ ΣΤΗ ΣΩΣΤΗ ΕΠΙΛΟΓΗ.

1.
A. _____ is that?
B. It is a monkey.



- What This
 It That

2.
A. _____ those?
B. They are tigers.



- What Are
 Are they What are

3.
A. What _____ that?
B. It is a rabbit.



- are is
 it's is a

4.
What _____?
B. It is a strawberry.



- is that is
 it's that is

5.
A. What are those?
B. _____ are computers.



- They It's
 What It

6.
A. What are those?
B. They _____ footballs.



- are is a
 is not are

7.
A. _____ a tiger?
B. Yes, it is.



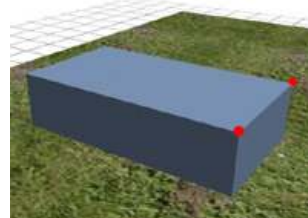
- Is that It is
 Are these Is

8.
A. Are these _____?
B. Yes, they are.



- dresses dress
 a dress a dresses

9.
A. Is _____ box?
B. Yes, it is.



- that a
 this a this

10.
A. Are _____ dogs?
B. Yes, they are.



- it this
 those what

11.
A. Is that a rubber?
B. No, it _____ .



- is no not
 isn't not is

12.
A. _____ this a monkey?
B. No, it isn't.



- Is It's
 Are What

13.
A. Is it a bus?
B. No, _____ isn't.



- they what
 that's it

14.
A. Are they jumpers?
B. _____, they aren't.



- Yes Not
 What No

15.
A. Are these _____?
B. No, they aren't.



- a potatos potatoes
 a potato potato

16.
A. Are those elephants?
B. No, _____ n't.



- are they are
 they it is

17.
A. _____ this?
B. It is a fish.



- What Is it
 What is It's

18.
A. What _____?
B. It is a boat.



- that is is that
 that is

19.
A. What are those?
B. _____ crocodiles.



- It's They're
 They Are

20.
A. _____ these?
B. They are hats.



- What is Are they
 What What are

206b. ΣΥΡΤΕ ΚΑΙ ΤΑΙΡΙΑΞΤΕ.

1. ΕΝΙΚΟ ΜΕ ΠΛΥΘΥΝΤΙΚΟ

Choice	Correct Match	Match
this		they
isn't		are
that		these
is		those
it		aren't

2. ΣΥΡΤΕ ΚΑΙ ΤΑΙΡΙΑΞΤΕ ΕΝΙΚΟ ΜΕ ΠΛΥΘΥΝΤΙΚΟ

Choice	Correct Match	Match
That is an airbed.		These are airbeds.
It is an airbed.		Those are airbeds.
It is not an airbed.		They are airbeds.
That is not an airbed.		These are not airbeds.
This is an airbed.		They are not airbeds.
This is not an airbed.		Those are not airbeds.

3. ΕΡΩΤΗΣΗ ΜΕ ΑΠΑΝΤΗΣΗ

Choice	Correct Match	Match
What are these?		It is ...
Are these ...?		They are ...
Is this ...?		Yes, it ...
What is this?		No, they ...

4. ΕΡΩΤΗΣΗ ΜΕ ΑΠΑΝΤΗΣΗ

Choice	Correct Match	Match
What is that?		Yes, they ...
Are those ...?		No, it ...
Is that ...?		They are ...
What are those?		It is ...

5. ΕΡΩΤΗΣΗ ΜΕ ΑΠΑΝΤΗΣΗ

Choice	Correct Match	Match
What are they?		Yes, it ...
Is it ...?		They are ...
What is it?		No, they ...
Are they ...?		It is ...

206c. ΣΥΡΤΕ ΚΑΙ ΤΑΙΡΙΑΞΕΤΕ.

1. ΕΡΩΤΗΣΗ ΜΕ ΑΠΑΝΤΗΣΗ

Choice	Correct Match	Match
What are those?		Yes, it is.
What is that?		No, they aren't.
Are those computers?		It is a computer.
Is that a computer?		They are computers.

2. ΕΡΩΤΗΣΗ ΜΕ ΑΠΑΝΤΗΣΗ

Choice	Correct Match	Match
Is this a motorbike?		It is a motorbike.
What are these?		Yes, they are.
What is this?		They are motorbikes.
Are these motorbikes?		No, it isn't.

3. ΕΡΩΤΗΣΗ ΜΕ ΑΠΑΝΤΗΣΗ

Choice	Correct Match	Match
Are they taxis?		It is a taxi.
What is it?		Yes, it is.
Is it a taxi?		They are taxis.
What are they?		No, they aren't.

4. ΚΑΤΑΦΑΣΗ ΜΕ ΕΡΩΤΗΣΗ

Choice	Correct Match	Match
These are monkeys.		Is it a monkey?
This is a monkey.		Are they monkeys?
That is a monkey.		Are those monkeys?
Those are monkeys.		Is this a monkey?
They are monkeys.		Is that a monkey?
It is a monkey.		Are these monkeys?

5. ΚΑΤΑΦΑΣΗ ΜΕ ΑΡΝΗΣΗ

Choice	Correct Match	Match
They are kites.		That is not a kite.
This is a kite.		It isn't a kite.
It is a kite.		They aren't kites.
That is a kite.		This is not a kite.
These are kites.		Those are not kites.
Those are kites.		These are not kites.

206d. ΣΥΡΤΕ ΚΑΙ ΒΑΛΤΕ ΣΤΗ ΣΩΣΤΗ ΣΕΙΡΑ .

1.

Choice	Correct Order
those	
What	
?	
are	

2.

Choice	Correct Order
is	
What	
?	
that	

3.

Choice	Correct Order
That	
card	
.	
not	
is	
a	

4.

Choice	Correct Order
a	
.	
is	
brush	
That	

5.

Choice	Correct Order
?	
What	
they	
are	

6.

Choice	Correct Order
.	
they	
aren't	
No	
,	

7.

Choice	Correct Order
Is	
rabbit	
this	
a	
?	

8.

Choice	Correct Order
isn't	
No	
it	
,	
.	

9.

Choice	Correct Order
?	
Are	
those	
boxes	

10.

Choice	Correct Order
?	
Are	
tigers	
these	

11.

Choice	Correct Order
are	
.	
they	
,	
Yes	

12.

Choice	Correct Order
Is	
?	
it	
octopus	
an	

13.

Choice	Correct Order
lions	
they	
Are	
?	

14.

Choice	Correct Order
is	
it	
,	
Yes	
.	

15.

Choice	Correct Order
are	
What	
?	
these	

16.

Choice	Correct Order
.	
a	
is	
baby	
This	

17.

Choice	Correct Order
This	
tomato	
a	
is	
.	
not	

18.

Choice	Correct Order
is	
this	
What	
?	

19.

Choice	Correct Order
Is	
dress	
a	
that	
?	

20.

Choice	Correct Order
.	
a	
It	
tomato	
is	

22.

Choice	Correct Order
What	
it	
?	
is	

21.

Choice	Correct Order
is	
.	
zebra	
not	
a	
It	

206e. ΣΥΡΤΕ ΚΑΙ ΒΑΛΤΕ ΣΤΗ ΣΩΣΤΗ ΣΕΙΡΑ .

1.



Choice	Correct Order
e	
k	
m	
o	
n	
y	

2.



Choice	Correct Order
t	
o	
er	
m	
pu	
c	

3.



Choice	Correct Order
r	
bb	
s	
u	
er	

4.



Choice	Correct Order
to	
ke	
mo	
bi	
r	

5.



Choice	Correct Order
s	
x	
i	
t	
a	

6.



Choice	Correct Order
po	
m	
li	
ce	
n	
a	

7.



Choice	Correct Order
e	
t	
i	
s	
k	

8.



Choice	Correct Order
s	
i	
t	
h	

9.



Choice	Correct Order
e	
h	
t	
o	
s	

10.



Choice	Correct Order
r	
n	
e	
t	
a	
'	

11.



Choice	Correct Order
t	
e	
h	
y	

unit 207

Numbers (one, two, three, ..., thirty)

Colours (black, white, ...)

Adjectives (fat, thin, ...)

vocabulary – theory - examples

english	greek
big	μεγάλος
black	μαύρο
blue	μπλε
brown	καφέ
eight	οχτώ
eighteen	δεκαοχτώ
eleven	έντεκα
fat	χονδρός
fifteen	δεκαπέντε
five	πέντε
four	τέσσερα
fourteen	δεκατέσσερα
green	πράσινο
happy	χαρούμενος
long	μακρύς
new	καινούργιος
nine	εννιά
nineteen	δεκαννιά
old	παλιός
old	γέρος
one	ένα
orange	πορτοκαλί
pink	ροζ
red	κόκκινο
sad	λυπημένος
seven	επτά
seventeen	δεκαεπτά
short	κοντός
six	έξη
sixteen	δεκαέξη
small	μικρός
ten	δέκα

thin	αδύνατος
thirteen	δεκατρία
thirty	τριάντα
three	τρία
twelve	δώδεκα
twenty	είκοσι
twenty-eight	εικοσιοχτώ
twenty-five	εικοσιπέντε
twenty-four	εικοσιτέσσερα
twenty-nine	εικοσιεννιά
twenty-one	εικοσιένα
twenty-seven	εικοσιεπτά
twenty-six	εικοσιέξη
twenty-three	εικοσιτρία
twenty-two	εικοσιδύο
two	δύο
white	άσπρο
yellow	κίτρινο
young	νεαρός
zero	μηδέν

greek	english
αδύνατος	
άσπρο	
γέρος	
δέκα	
δεκαέξη	
δεκαεπτά	
δεκαννιά	
δεκαοχτώ	
δεκαπέντε	
δεκατέσσερα	

δεκατρία	
δύο	
δώδεκα	
είκοσι	
εικοσιδύο	
εικοσιένα	
εικοσιεννιά	
εικοσιέξη	
εικοσιεπτά	
εικοσιοχτώ	
εικοσιπέντε	
εικοσιτέσσερα	
εικοσιτρία	
ένα	
εννιά	
έντεκα	
έξη	
επτά	
καινούργιος	
καφέ	
κίτρινο	
κόκκινο	
κοντός	
λυπημένος	

μακρύς	
μαύρο	
μεγάλος	
μηδέν	
μικρός	
μπλε	
νεαρός	
οχτώ	
παλιός	
πέντε	
πορτοκαλί	
πράσινο	
ροζ	
τέσσερα	
τρία	
τριάντα	
χαρούμενος	
χονδρός	

numbers	αριθμοί
0	zero
1	one
2	two
3	three
4	four
5	five
6	six
7	seven
8	eight
9	nine
10	ten
11	eleven

12	twelve
13	thirteen
14	fourteen
15	fifteen
16	sixteen
17	seventeen
18	eighteen
19	nineteen
20	twenty
21	twenty-one
22	twenty-two
23	twenty-three
24	twenty-four

25	twenty-five
26	twenty-six
27	twenty-seven
28	twenty-eight
29	twenty-nine
30	thirty

colours	χρώματα
black	μαύρο
white	άσπρο
red	κόκκινο
blue	μπλε
green	πράσινο
orange	πορτοκαλί
brown	καφέ
yellow	κίτρινο
pink	ροζ

adjectives	επίθετα
fat	χονδρός
thin	αδύνατος
big	μεγάλος
small	μικρός
new	καινούργιος
old	παλιός
long	μακρύς
short	κοντός
young	νεαρός
old	γέρος
happy	χαρούμενος
sad	λυπημένος

EXAMPLES	
This is a white car.	Αυτό είναι ένα άσπρο αυτοκίνητο.
That is a red bus.	Εκείνο είναι ένα κόκκινο λεωφορείο.
It is a brown horse.	Είναι ένα καφέ άλογο.
These are black cats.	Αυτές είναι μαύρες γάτες.
Those are white horses.	Εκείνα είναι άσπρα άλογα.
They are yellow volleyballs.	Είναι κίτρινες μπάλες του βόλλευ.
What colour is this?	Τι χρώμα είναι αυτό;
It is blue .	Είναι μπλε.
That is a fat dog.	Αυτός είναι ένας χοντρός σκύλος.
Those are thin cats.	Εκείνες είναι αδύνατες γάτες.
This is a big airbed.	Αυτό είναι ένα μεγάλο φουσκωτό στρώμα.
These are small tables.	Αυτά είναι μικρά τραπέζια.
A. Is that a new book? B. No, it isn't a new book. It is an old book.	A. Είναι εκείνο ένα καινούργιο βιβλίο; B. Όχι, δεν είναι καινούργιο βιβλίο. Είναι παλιό βιβλίο.
A. What is that? B. It is a short dress.	A. Τι είναι εκείνο; B. Είναι ένα κοντό φόρεμα.

unit 207

Numbers (one, two, three, ..., thirty)

Colours (black, white, ...)

Adjectives (fat, thin, ...)

e-learning exercises

207a. ΚΑΝΤΕ ΚΛΙΚ ΣΤΗ ΣΩΣΤΗ ΕΠΙΛΟΓΗ.

1.

3 = _____



- two six
 three thirteen

2.

21 = _____



- twelve twoone
 twenty-one onetwenty

3.

1 = _____



- six ten
 one eleven

4.

4 = _____



- nine fourteen
 four five

5.

27 = _____



- seventeen twenty-seven
 two-seven twelve seven

6.

5 = _____



- ten fifteen
 five nine

7.

2 = _____



- two twelve
 one twenty

8.

19 = _____



- nineteen nine
 onenine tennine

9.

20 = _____



- twenty two
 twelve tenten

10.

6 = _____



- seven sixteen
- six five

14.

17 = _____



- seventeen eighteen
- seven sixteen

18.

24 = _____



- twenty-four fourteen
- two four four two

11.

22 = _____



- twenty-two two two
- twelve two two twenty

15.

8 = _____



- eighteen three
- eight nine

19.

16 = _____



- sixteen tensix
- onesix six

12.

7 = _____



- eight nine
- seven seventeen

16.

28 = _____



- twelve eight twenty-eight
- two-eight eighteen

20.

10 = _____



- eleven one
- ten six

13.

23 = _____



- three two twenty-three
- thirteen two three

17.

9 = _____



- nine seven
- nineteen eight

21.

29 = _____



- nine-twenty nineteen
- twenty-nine two nine

22.

11 = _____



eleven ten
 tenone oneone

23.

18 = _____



seventeen eight
 eighteen nineteen

24.

30 = _____



thirty twenty
 three zero thirteen

25.

15 = _____



fifteen onefive
 tenfive five

26.

12 = _____



twelve tentwo
 twenty onetwo

27.

25 = _____



twelve five twenty-five
 two five five two

28.

13 = _____



onethree thirteen
 three tenthree

29.

26 = _____



two-six sixteen
 twenty-six six-twenty

30.

14 = _____



tenfour onefour
 four fourteen

207b. ΚΑΝΤΕ ΚΛΙΚ ΣΤΗ ΣΩΣΤΗ ΕΠΙΛΟΓΗ.

1. μαύρο



brown black
 pink blue

2. μπλέ



blue black
 pink brown

3. καφέ



black pink
 blue brown

4. ροζ



brown blue
 black pink

5. κόκκινο



white red
 blue yellow

6. κίτρινο



white red
 blue yellow

7. πράσινο



brown green
 red yellow

8. άσπρο



white yellow
 red blue

9. πορτοκαλί



blue orange
 white green

207c. ΣΥΡΤΕ ΚΑΙ ΒΑΛΤΕ ΣΤΗ ΣΩΣΤΗ ΣΕΙΡΑ .

1.



Choice	Correct Order
umbrella	
red	
This	
is	
a	
.	

2.



Choice	Correct Order
pig	
is	
.	
a	
pink	
That	

3.



Choice	Correct Order
It	
black	
.	
a	
horse	
is	

4.



Choice	Correct Order
?	
Is	
a	
this	
deckchair	
green	

5.



Choice	Correct Order
yellow	
snake	
a	
that	
Is	
?	

6.



Choice	Correct Order
it	
kangaroo	
Is	
brown	
a	
?	

7.



Choice	Correct Order
airbed	
?	
What	
colour	
that	
is	

8.



Choice	Correct Order
colour	
airbeds	
?	
those	
are	
What	

9.



Choice	Correct Order
That	
.	
girl	
happy	
is	
a	

10.



Choice	Correct Order
Is	
this	
?	
new	
computer	
a	

11.



Choice	Correct Order
that	
an	
old	
?	
Is	
computer	

12.



Choice	Correct Order
an	
This	
is	
old	
.	
man	

14.



Choice	Correct Order
that	
Is	
dress	
long	
a	
?	

13.



Choice	Correct Order
a	
young	
man	
is	
.	
It	

207d. ΣΥΠΤΕ ΚΑΙ ΤΑΙΡΙΑΞΕΤΕ.

1.



Choice	Correct Match	Match
-A. Is that _____ thin elephant?		What
-B. No, it _____ a thin elephant.		a
-A. _____ is it?		fat
-B. It is a _____ elephant.		isn't

2.



Choice	Correct Match	Match
-A. _____ those thin elephants?		Are
-B. No, _____ are not thin elephants.		fat
-A. _____ are they?		they
-B. They are _____ elephants.		What

3.



Choice	Correct Match	Match
-A. _____ that a new computer?		an
-B. No, it isn't _____ new computer.		Is
-A. What is _____ ?		it
-B. It is _____ old computer.		a

4.



Choice	Correct Match	Match
-A. Are _____ new computers?		old
-B. No, they _____ new computers.		are
-A. What _____ they?		those
-B. They are _____ computers.		aren't

207e. ΣΥΠΤΕ ΚΑΙ ΤΑΙΡΙΑΕΤΕ.

1.

Choice	Correct Match	Match
11		two
12		one
21		eleven
1		twenty-one
2		twelve

2.

Choice	Correct Match	Match
4		three
22		twenty-three
23		thirteen
3		four
13		twenty-two

3.

Choice	Correct Match	Match
5		twenty-five
25		twenty-four
14		fifteen
24		fourteen
15		five

4.

Choice	Correct Match	Match
16		twenty-six
26		six
17		seven
6		seventeen
7		sixteen

5.

Choice	Correct Match	Match
28		eighteen
9		eight
18		twenty-seven
8		twenty-eight
27		nine

6.

Choice	Correct Match	Match
10		nineteen
29		thirty
19		twenty-nine
30		twenty
20		ten

207f. ΣΥΡΤΕ ΚΑΙ ΤΑΙΡΙΑΞΤΕ.

1.

Choice	Correct Match	Match
white		μπλε
green		μαύρο
red		άσπρο
black		κόκκινο
blue		πράσινο

2.

Choice	Correct Match	Match
green		καφέ
orange		ροζ
pink		κίτρινο
brown		πράσινο
yellow		πορτοκαλί

3.

Choice	Correct Match	Match
thin		μικρός
big		αδύνατος
small		χονδρός
fat		μεγάλος

4.

Choice	Correct Match	Match
old		μακρός
long		καινούργιος
short		παλιός
new		κοντός

5.

Choice	Correct Match	Match
sad		γέρος
happy		νεαρός
young		λυπημένος
old		χαρούμενος

unit 208

The definite article (the). There is/are Is/Are there ...?

Yes/No, there is/are/isn't/aren't.

Prepositions (on, in, under, behind). Where is/are ...?

vocabulary – theory - examples

english	greek
bedroom	υπνοδωμάτιο
behind	πίσω από
birds	πουλιά
England	Αγγλία
garden	κήπος
in	μέσα σε
kitchen	κουζίνα
London	Λονδίνο
on	πάνω σε
pictures	εικόνες
under	κάτω από
wall	τοίχος

greek	english
Αγγλία	
εικόνες	
κάτω από	
κήπος	
κουζίνα	
Λονδίνο	
μέσα σε	
πάνω σε	
πίσω από	
πουλιά	
τοίχος	
υπνοδωμάτιο	

Βάζουμε THE (ο, η, το, οι, οι, τα) μπροστά από συγκεκριμένα πρόσωπα, ζώα ή πράγματα.

Δεν βάζουμε THE μπροστά στα κύρια ονόματα.

The man is old.	Ο άνδρας είναι γέρος.
The boy is young.	Το αγόρι είναι νεαρό.
The chair is old.	Η καρέκλα είναι παλιά.
The strawberries are red.	Οι φράουλες είναι κόκκινες.
The dresses are pink.	Τα φορέματα είναι ροζ.
The girl is in _ London.	Το κορίτσι είναι στο Λονδίνο.
_ John is a happy young man.	Ο Τζων είναι ένας χαρούμενος νέος άνδρας.

Οι φράσεις THERE IS, THERE ARE σημαίνουν υπάρχει, υπάρχουν.

Για ερωτήσεις αντιστρέφουμε και γίνονται IS THERE, ARE THERE?

Για αρνήσεις χρησιμοποιούμε THERE IS NOT (ISN'T), THERE ARE NOT (AREN'T).

Για να δείξουμε που είναι κάτι χρησιμοποιούμε τις προθέσεις on (πάνω σε), in (μέσα σε), under (κάτω από), behind (πίσω από).

There is a hat on the horse.	Υπάρχει ένα καπέλο πάνω στο άλογο.
A. Is there a baby behind the chair? B. Yes, there is .	A. Υπάρχει ένα μωρό πίσω από την καρέκλα; B. Ναι, υπάρχει.
A. Are there two sandwiches in the kitchen? B. No, there aren't .	A. Υπάρχουν δύο σάντουιτς στην κουζίνα; B. Όχι, δεν υπάρχουν.

Για να ρωτήσουμε που είναι κάτι χρησιμοποιούμε τη λέξη WHERE (που) και στον ενικό και στον πληθυντικό.

A. Where is the ice cream? B. It is on the table.	A. Που είναι το παγωτό; B. Είναι πάνω στο τραπέζι.
A. Where are the kangaroos? B. They are in the jungle.	A. Που είναι τα καγκουρώ; B. Είναι μέσα στη ζούγκλα.

unit 208

The definite article (the). There is/are Is/Are there ...?
Yes/No, there is/are/isn't/aren't.

Prepositions (on, in, under, behind). Where is/are ...?
e-learning exercises

208a. ΚΑΝΤΕ ΚΛΙΚ ΣΤΗ ΣΩΣΤΗ ΕΠΙΛΟΓΗ.

1. _____ is a mouse in the bedroom.



- It Where
 The There

2. _____ mouse is in the kitchen.



- The There
 It Where

3. A. _____ is the mouse?
B. In the kitchen.



- What That
 Where There

4. A. _____ is in the kitchen?
B. The mouse is.



- Where What
 What's There

5. A. _____ a mouse in the kitchen?
B. Yes, there is.



- Where is Is there
 Is it There is

6. A. Is _____ mouse in the kitchen?
B. Yes, it is.



- the that
 there it

7. _____ are three birds in the garden.



- Where They
 The There

8. _____ three birds are in the garden.



- There are They're
 They The

9. A. _____ are in the garden?
B. The three birds are.



- They What
 Where What's

10.
A. _____ the birds?
B. In the garden.



- Where are What are
 Where What

11.
A. Are _____ three birds in the garden?
B. Yes, there are.



- the where
 they there

12.
A. Are _____ three birds in the garden?
B. Yes, they are.



- the they
 what there

13.
Jim is from _____ London.



- the -
 a there

14.
_____ are 28 days in February.



- The They
 Those There

15.
A. Is there a dog in the house?
B. Yes, _____ is.



- there it
 the they

16.
A. Is the dog in the house?
B. Yes, _____ is.



- there it
 the dog

17.
A. Where is the dog?
B. _____ house.



- In It is in
 Behind In the

18.
A. Are the girls in England?
B. Yes, _____ are.



- where they
 there it

19.
A. _____ the girls?
B. In England.



- Where Where are
 What are Are there

20.
A. _____ the girls?
B. They are happy.



- What are Where are
 What's What

208b. ΣΥΡΤΕ ΚΑΙ ΤΑΙΡΙΑΞΤΕ.

1. ΚΑΤΑΦΑΣΗ ΜΕ ΕΡΩΤΗΣΗ

Choice	Correct Match	Match
That is a cat.		Are the two cats on the wall?
There are two cats on the wall.		Is that a cat?
Those are two cats.		Is there a cat on the wall?
The cat is on the wall.		Are there two cats on the wall?
The two cats are on the wall.		Is the cat on the wall?
There is a cat on the wall.		Are those two cats?

2. ΚΑΤΑΦΑΣΗ ΜΕ ΑΡΝΗΣΗ

Choice	Correct Match	Match
These are two dogs.		There isn't a dog in the garden.
There is a dog in the garden.		The two dogs aren't in the garden.
The dog is in the garden.		These aren't two dogs.
There are two dogs in the garden.		The dog isn't in the garden.
This is a dog.		There aren't two dogs in the garden.
The two dogs are in the garden.		This isn't a dog.

3. ΕΡΩΤΗΣΗ ΜΕ ΑΡΝΗΣΗ

Choice	Correct Match	Match
Are there two balls under the table?		The two balls aren't under the table.
Is it a ball?		They aren't two balls.
Is there a ball under the table?		The ball isn't under the table.
Are the two balls under the table?		There aren't two balls under the table.
Is the ball under the table?		There isn't a ball under the table.
Are they two balls?		It isn't a ball.

4. ΕΡΩΤΗΣΗ ΜΕ ΑΠΑΝΤΗΣΗ

Choice	Correct Match	Match
Where are the two cars?		There is a car behind the house.
What is there behind the house?		There are two cars behind the house.
What are there behind the house?		It is behind the house.
What are those behind the house?		They are behind the house.
What is that behind the house?		They are two cars.
Where is the car?		It is a car.

208c. ΣΥΡΤΕ ΚΑΙ ΒΑΛΤΕ ΣΤΗ ΣΩΣΤΗ ΣΕΙΡΑ .

1.



Choice	Correct Order
the	
in	
The	
elephant	
is	
jungle.	

3.



Choice	Correct Order
the	
?	
is	
tiger	
Where	

5.



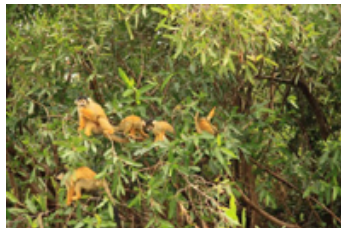
Choice	Correct Order
kangaroos	
in	
Australia.	
The	
are	

2.



Choice	Correct Order
the	
is	
There	
jungle.	
elephant	
an	
in	

4.



Choice	Correct Order
?	
Are the	
in the	
monkeys	
jungle	

6.



Choice	Correct Order
boys	
Are	
the	
in	
England?	
two	

7.



Choice	Correct Order
there	
giraffes	
Athens?	
Are	
in	

8.



Choice	Correct Order
a	
boy.	
is	
happy	
John	

9.



Choice	Correct Order
behind	
house.	
dogs	
the	
There	
are	
two	

10.



Choice	Correct Order
behind	
there	
Are	
dogs	
two	
house?	
the	

11.



Choice	Correct Order
aren't	
There	
dogs	
behind	
two	
house.	
the	

12.



Choice	Correct Order
house.	
are	
two	
dogs	
behind	
The	
the	

13.



Choice	Correct Order
dogs	
Are the	
house?	
behind the	
two	

14.



Choice	Correct Order
behind	
dogs	
two	
the	
The	
aren't	
house.	

15.



Choice	Correct Order
house.	
a	
the	
behind	
cat	
There	
is	

16.



Choice	Correct Order
in	
the	
The	
is	
kitchen.	
cat	

17.



Choice	Correct Order
under	
table?	
there	
cat	
the	
a	
Is	

18.



Choice	Correct Order
in the	
kitchen	
cat	
?	
Is the	

19.



Choice	Correct Order
cat	
There	
on	
a	
isn't	
the	
table.	

20.



Choice	Correct Order
wall.	
cat	
on	
the	
isn't	
The	

21.



Choice	Correct Order
Where	
the	
is	
?	
cat	

22.



Choice	Correct Order
two	
are	
?	
dogs	
the	
Where	

208d. ΣΥΠΤΕ ΚΑΙ ΤΑΙΡΙΑΕΤΕ.

1.



Choice	Correct Match	Match
-A. _____ there a mouse in the kitchen?		What
-B. _____, there isn't a mouse in the kitchen.		Is
-A. _____ is there in the kitchen?		a
-B. There is _____ cat in the kitchen.		No

2.



Choice	Correct Match	Match
-A. Is _____ cat under the table?		is
-B. Yes, _____ is.		the
-A. _____ is the cat?		it
-B. It _____ under the table.		Where

3.



Choice	Correct Match	Match
-A. Are there two _____ in the bedroom?		bed
-B. No, there _____ .		beds
-A. Is there one _____ in the bedroom?		is
-B. Yes, there _____ .		aren't

208e. ΣΥΡΤΕ ΚΑΙ ΤΑΙΡΙΑΞΤΕ.

1.

Choice	Correct Match	Match
on		κάτω από
in		πίσω από
behind		μέσα σε
under		πάνω σε

2.

Choice	Correct Match	Match
wall		κήπος
kitchen		υπνοδωμάτιο
garden		κουζίνα
bedroom		τοίχος

3.

Choice	Correct Match	Match
chairs		πουλιά
birds		καρέκλες
dresses		εικόνες
pictures		φορέματα

4.

Choice	Correct Match	Match
man		τοίχος
ball		τραπέζι
wall		άνδρας
table		μπάλα

5.

Choice	Correct Match	Match
It is		Υπάρχει ... ;
It isn't		Υπάρχει
There is		Δεν υπάρχει
There isn't		Είναι
Is there ... ?		Είναι ... ;
Is it ... ?		Δεν είναι

unit 209

The verb **TO BE**. I am, you are, he is, she is, it is, we are, you are, they are. Am I? Are you?, I am not, You are not/aren't, He is not/isn't

vocabulary – theory - examples

english	greek
bedroom	υπνοδωμάτιο
big	μεγάλος
clown	κλόουν
cowboy	καουμπόυ
doctor	γιατρός
England	Αγγλία
France	Γαλλία
Germany	Γερμανία
Greece	Ελλάδα
here	εδώ
ill	άρρωστος
Italy	Ιταλία
kitchen	κουζίνα
London	Λονδίνο
nurse	νοσοκόμα
policeman	αστυνομικός
postman	ταχυδρόμος
sad	λυπημένος
singer	τραγουδιστής
small	μικρός
sofa	καναπές
Spain	Ισπανία
Spiderman	Ανθρωπος Αράχνη
Superman	Υπεράνθρωπος
teacher	δάσκαλος, καθηγητής
wardrobe	ντουλάπα ρούχων

greek	english
Αγγλία	
Ανθρωπος Αράχνη	
άρρωστος	
αστυνομικός	
Γαλλία	
Γερμανία	
γιατρός	
δάσκαλος, καθηγητής	
εδώ	
Ελλάδα	
Ισπανία	
Ιταλία	
καναπές	
καουμπόυ	
κλόουν	
κουζίνα	
Λονδίνο	
λυπημένος	
μεγάλος	
μικρός	
νοσοκόμα	
ντουλάπα ρούχων	
ταχυδρόμος	
τραγουδιστής	
Υπεράνθρωπος	
υπνοδωμάτιο	

I AM, YOU ARE, HE/SHE/IT IS, WE/YOU/THEY ARE.

Κατάφαση		
I am	I'm	Εγώ είμαι
You are	You're	Εσύ είσαι
He is	He's	Αυτός είναι
She is	She's	Αυτή είναι
It is	It's	Αυτός/Αυτή/Αυτό είναι
We are	We're	Εμείς είμαστε
You are	You're	Εσείς είσαστε
They are	They're	Αυτοί/Αυτές/Αυτά είναι

Ερώτηση Εχουμε αντιστροφή, οπότε το I am γίνεται Am I?, κλπ.	
Am I?	Είμαι εγώ;
Are you?	Είσαι εσύ;
Is he?	Είναι αυτός;
Is she?	Είναι αυτή;
Is it?	Είναι αυτός/ αυτή/ αυτό;
Are we?	Είμαστε εμείς
Are you?	Είσαστε εσείς
Are they?	Είναι αυτοί/ αυτές/ αυτά;

Αρνηση Προσθέτουμε το NOT, οπότε το I am γίνεται I am not, κλπ.		
I am not	I'm not	Εγώ δεν είμαι
You are not	You're not/You aren't	Εσύ δεν είσαι
He is not	He's not/He isn't	Αυτός δεν είναι
She is not	She's not/She isn't	Αυτή δεν είναι
It is not	It's not/ It isn't	Αυτός / αυτή / αυτό δεν είναι
We are not	We're not/ We aren't	Εμείς δεν είμαστε
You are not	You're not/You aren't	Εσείς δεν είσαστε
They are not	They're not/They aren't	Αυτοί/Αυτές/Αυτά δεν είναι

EXAMPLES

Hello! I am John. I' m a teacher.	Γειά σας! Είμαι ο Τζων. Είμαι καθηγητής.
You are a girl.	Είσαι κορίτσι.
That' s George. He is a boy.	Εκείνος είναι ο Τζωρτζ. Είναι αγόρι.
This is Elisabeth. She is a queen.	Αυτή είναι η Ελίζαμπεθ. Είναι βασίλισσα.
That' s a dog. It is in the garden.	Εκείνος είναι σκύλος. Είναι στον κήπο.
We are students.	Είμαστε μαθητές.
You are cowboys.	Είσαστε καουμπόυς.
They are in the house.	Αυτοί είναι μέσα στο σπίτι.
A. Am I a singer? B. Yes, you are .	A. Είμαι τραγουδιστής; B. Ναι, είσαι.
A. Are you from Italy? B. No, I am not.	A. Είσαι από την Ιταλία; B. Οχι, δεν είμαι.
A. Is Jim from Germany? B. No, he isn't from Germany. He is from England.	A. Είναι ο Τζιμ από τη Γερμανία; B. Οχι, δεν είναι από τη Γερμανία. Είναι από την Αγγλία.
A. Where is the dog? B. It is in the garden.	A. Που είναι ο σκύλος; B. Είναι στον κήπο.
A. Are we teachers? B. No, you aren't .	A. Είμαστε καθηγητές; B. Οχι, δεν είσαστε.
A. Are you singers? B. Yes, we are .	A. Είσαστε τραγουδιστές; B. Ναι, είμαστε.
A. Are Ann and Liz nurses? B. No, they aren't nurses. They are singers.	A. Είναι η Ανν και η Λιζ νοσοκόμες; B. Οχι, δεν είναι νοσοκόμες. Είναι τραγουδίστριες.

unit 209

The verb TO BE. I am, you are, he is, she is, it is, we are, you are, they are. Am I? Are you?, I am not, You are not/aren't, He is not/isn't

e-learning exercises

209a. ΚΑΝΤΕ ΚΛΙΚ ΣΤΗ ΣΩΣΤΗ ΕΠΙΛΟΓΗ.

1. Bill is from Germany. _____ is from Germany.



- It She
 I He

2. Ann and Liz aren't from Spain. _____ aren't from Spain.



- It He
 They She

3. Helen is not from Italy. _____ isn't from Italy.



- You She
 We They

4. Is _____ old?



- he they
 we you

5. Are _____ young?



- you I
 she he

6. Is _____ thin?



- it we
 you I

7. Am _____ fat?



- he you
 I she

8. Are _____ sad?



- he they
 she I

9. Is _____ from London?



- they she
 we you

10. Are _____ in a taxi?



() I () she
() we () he

11. Jim and Mary _____ here.



() am () isn't
() is () are

12. He _____ ill.



() is () am
() are () aren't

13. It _____ a bus.



() is () are
() am not () am

14. We _____ in the house.



() are () isn't
() is () am

15. She _____ a singer.



() am not () are
() isn't () not is

16. You _____ a policeman.



() am () is
() are () am not

17. I _____ a teacher.



() are () is
() 'm () isn't

18. You _____ happy boys.



() am () are
() isn't () is

19. They _____ big tigers.



() isn't () am
() is () are

20. The house _____ big.



() am not. () am
() are () is

209b. ΣΥΠΤΕ ΚΑΙ ΤΑΙΠΙΑΞΤΕ.

1.

Choice	Correct Match	Match
_____ I young?		Are
I _____ in the kitchen.		Am
_____ it big?		is
They _____ from Greece.		am
_____ you on the motorbike?		are
The horse _____ white.		Is

2.

Choice	Correct Match	Match
_____ I ill?		are
Where _____ the carrots?		Are
_____ she a nurse?		Am
Where _____ Jim?		Is
I _____ a happy clown.		is
_____ we young children?		am

3.

Choice	Correct Match	Match
I _____ in a taxi.		Is
They _____ small monkeys.		Am
_____ the girls happy?		is
_____ she a teacher?		am
He _____ in the bedroom.		Are
_____ I a policeman?		are

4.

Choice	Correct Match	Match
She _____ on the sofa.		Am
_____ I from Paris?		am not
I _____ a teacher.		Is
_____ they big?		is not
They _____ brothers.		Are
_____ it a small monkey?		are not

209c. ΣΥΡΤΕ ΚΑΙ ΒΑΛΤΕ ΣΤΗ ΣΩΣΤΗ ΣΕΙΡΑ .

1.



Choice	Correct Order
doctor	
He	
is	
a	
.	

2.



Choice	Correct Order
she	
?	
from	
Is	
London	

3.



Choice	Correct Order
?	
Where	
you	
are	

4.



Choice	Correct Order
in the	
?	
jumper	
wardrobe	
Is the	

5.



Choice	Correct Order
.	
I	
Superman	
am	

6.



Choice	Correct Order
?	
Spiderman	
Are	
you	

7.



Choice	Correct Order
woman	
she	
Is	
an	
old	
?	

8.



Choice	Correct Order
brothers	
We	
are	
.	

9.



Choice	Correct Order
a	
.	
That's	
red	
car	

10.



Choice	Correct Order
.	It
garden	is
in	in
is	the
It	garden
the	.

209d. ΣΥΠΤΕ ΚΑΙ ΤΑΙΡΙΑΕΤΕ.

1.



Choice	Correct Match	Match
-A. Is Helen _____ singer?		Is
-B. No, _____ isn't.		a
-A. _____ Jim a policeman?		he
-B. No, _____ isn't.		she

3.



Choice	Correct Match	Match
-A. _____ you old?		aren't
-B. No, I _____ old.		Are
-A. _____ I fat?		Am
-B. No, you _____ fat.		am not

2.



Choice	Correct Match	Match
-A. What _____ Helen?		She's
-B. _____ a nurse.		He's
-A. _____ is Jim?		is
-B. _____ a singer.		What

4.



Choice	Correct Match	Match
-A. What _____ I?		I
-B. You _____ thin.		you
-A. What are _____ ?		am
-B. _____ am young.		are

5.



Choice	Correct Match	Match
-A. Is _____ in the house?		isn't
-B. No, it _____ in the house.		it
-A. _____ you doctors?		aren't
-B. No, we _____ doctors.		Are

6.



Choice	Correct Match	Match
-A. _____ is the dog?		We
-B. _____ is in the garden.		Where
-A. _____ are you?		It
-B. _____ are teachers.		What

7.



Choice	Correct Match	Match
-A. Are _____ from France?		Are
-B. No, you _____ from France.		they
-A. _____ the boys sad?		we
-B. No, _____ aren't sad.		aren't

8.



Choice	Correct Match	Match
-A. _____ are we from?		What
-B. _____ are from Greece.		Where
-A. _____ are the boys?		They
-B. _____ are happy.		You

209e. ΣΥΡΤΕ ΚΑΙ ΤΑΙΡΙΑΞΤΕ.

1.

Choice	Correct Match	Match
Spiderman		εδώ
here		Υπεράνθρωπος
sofa		γιατρός
wardrobe		Ανθρωπος Αράχνη
Superman		ντουλάπα ρούχων
doctor		καναπές

2.

Choice	Correct Match	Match
small		κλόουν
clown		ταχυδρόμος
policeman		μικρός
teacher		μεγάλος
big		αστυνομικός
postman		δάσκαλος, καθηγητής

3.

Choice	Correct Match	Match
cowboy		άρρωστος
singer		Γερμανία
nurse		λυπημένος
ill		καουμπόυ
sad		νοσοκόμα
Germany		τραγουδιστής

4.

Choice	Correct Match	Match
France		Ελλάδα
Greece		Ιταλία
Italy		Ισπανία
London		Γαλλία
England		Λονδίνο
Spain		Αγγλία

unit 210

Possessive adjectives (my, your, his, her, its, our, your, their) vocabulary – theory - examples

english	greek
bicycle	ποδήλατο
bird	πουλί
boots	μπότες
dinner	δείπνο
face	πρόσωπο
friend	φίλος
hot	ζεστός
my	δικός μου
name	όνομα
nice	ωραίο
our	δικός μας
photograph	φωτογραφία
piano	πιάνο
their	δικός τους
upstairs	στο πάνω πάτωμα
your	δικός σου

greek	english
δείπνο	
δικός μας	
δικός μου	
δικός σου	
δικός τους	
ζεστός	
μπότες	
όνομα	
πιάνο	
ποδήλατο	
πουλί	
πρόσωπο	
στο πάνω πάτωμα	
φίλος	
φωτογραφία	
ωραίο	

MY, YOUR, HIS, HER, ITS, OUR, YOUR, THEIR

my=μου(δικός/ή/ό/οί/ές/ά μου), your=σου(δικός/ή/ό/οί/ές/ά σου), his =του(δικός/ή/ό/οί/ές/ά του), her=της(δικός/ή/ό/οί/ές/ά της), its=του(δικός/ή/ό/οί/ές/ά του), our =μας(δικός/ή/ό/οί/ές/ά μας), your=σας (δικός/ή/ό/οί/ές/ά σας), their=τους (δικός/ή/ό/οί/ές/ά τους)

Προσέξτε: Ενώ στα Ελληνικά λέμε Ο δικός μου, ΤΟ δικό σου κλπ., στα Αγγλικά δεν βάζουμε ποτέ THE μπροστά στα MY, YOUR κλπ. Ο φίλος μου = MY friend (OXI: THE my friend). Ενώ στα Ελληνικά τα ΜΟΥ, ΣΟΥ, ΤΟΥ κλπ. μπαίνουν και μετά τη λέξη, στα Αγγλικά τα MY, YOUR, HIS κλπ. μπαίνουν πάντα ΠΡΙΝ τη λέξη. το δικό ΜΟΥ βιβλίο = MY book, το βιβλίο ΜΟΥ = MY book (OXI: book MY)

His name is George.	Το όνομά του είναι Τζωρτζ.
That's her dog.	Εκείνος είναι ο σκύλος της.
Its name is Azor.	Το όνομά του είναι Αζόρ.
I am on my motorbike.	Είμαι πάνω στο μοτοποδήλατό μου.
Your face is nice.	Το πρόσωπό σου είναι ωραίο.
These are our new books.	Αυτά είναι τα καινούργια μας βιβλία.
Is this your house, Jim and Helen?	Είναι αυτό το σπίτι σας, Τζιμ και Ελένη;
Their shoes are old.	Τα παπούτσια τους είναι παλιά.

unit 210

Possessive adjectives (my, your, his, her, its, our, your, their) e-learning exercises

210a. ΚΑΝΤΕ ΚΛΙΚ ΣΤΗ ΣΩΣΤΗ ΕΠΙΛΟΓΗ.

1. _____ your name?



- What Is
 What's It's

4. _____ a bird.



- It's It
 Is Its

7. These _____ shoes.



- are the my are my
 my are my

2. _____ name is Paul.



- My I
 He You

5. This is my cat. That's _____ dinner.



- its it's
 it the its

8. _____ is in _____ house.



- She / she Her / she
 I / my She / her

3. Is that _____ car?



- her it
 the her she

6. A. Where are _____ boots?
B. Your boots are in the garden.



- I I am
 my we

9. My car _____ new.



- it's its
 is it is

10. _____ colour is red.



- Its It
- It's He

11. Your sister _____ a nice girl.



- is it's
- she's are

12. My brother _____ a young boy.



- is his
- he he's

13. _____ are brothers.



- We She
- It Our

14. _____ house is new.



- It He
- We Our

15. Look at my bicycle. _____ blue.



- Its It
- I'm It's

16. Look at my bicycle. _____ colour is blue.



- Its It's
- It My

17. Look at those girls. _____ faces are happy.



- They're They
- Their Her

18. Look at those girls. _____ are nice.



- She Their
- They Her

19. _____ name Bill?



- Your Is your
- Are you You're

20. _____ Helen?



- Is she Is her
- Her She's

210b. ΣΥΡΤΕ ΚΑΙ ΤΑΙΡΙΑΞΤΕ.

1.

Choice	Correct Match	Match
we		her
you		our
they		my
he		your
she		his
I		their

2.

Choice	Correct Match	Match
They are brothers. _____ names are Jim and Nick.		your
I am John. _____ name is John.		Its
A. What's _____ name? B. My name is John.		Their
This is my dog. _____ name is Azor.		My

3.

Choice	Correct Match	Match
This is Bill. _____ car is red.		your
We are brothers. _____ names are Jim and Nick.		His
A. Where are _____ books? B. Our books are on the table.		Her
That's Ann. _____ house is big.		Our

210c. ΣΥΡΤΕ ΚΑΙ ΒΑΛΤΕ ΣΤΗ ΣΩΣΤΗ ΣΕΙΡΑ .

1.



Choice	Correct Order
he	
fat	
?	
Is	

2.



Choice	Correct Order
Jim	
.	
name	
is	
His	

3.



Choice	Correct Order
boots	
those	
Are	
?	
her	

4.



Choice	Correct Order
?	
Are	
books	
these	
their	

5.



Choice	Correct Order
our	
?	
Are	
jumpers	
green	

6.



Choice	Correct Order
friend	
?	
he	
Is	
my	

7.



Choice	Correct Order
?	
Is	
nice	
friend	
my	

8.



Choice	Correct Order
they	
Are	
?	
upstairs	

9.



Choice	Correct Order
you	
Are	
my	
?	
in	
room	

10.



Choice	Correct Order
your	
?	
Is	
old	
school	

11.



Choice	Correct Order
brothers	
?	
Are	
my	
they	

12.



Choice	Correct Order
?	
Am	
brother	
their	
I	

13.



Choice	Correct Order
is	
not	
fat	
.	
He	

14.



Choice	Correct Order
is	
not	
.	
name	
His	
Jim	

15.



Choice	Correct Order
.	
her	
books	
Those	
not	
are	

16.



Choice	Correct Order
not	
their	
books	
are	
.	
These	

17.



Choice	Correct Order
green	
.	
Our	
jumpers	
not	
are	

18.



Choice	Correct Order
my	
is	
not	
He	
.	
friend	

19.



Choice	Correct Order
not	
My	
friend	
nice	
.	
is	

20.



Choice	Correct Order
in	
my	
You	
room.	
not	
are	

21.



Choice	Correct Order
not	
They	
are	
.	
upstairs	

22.



Choice	Correct Order
is	
.	
school	
not	
Your	
old	

23.



Choice	Correct Order
.	
not	
are	
brothers	
They	
my	

24.



Choice	Correct Order
their	
brother	
.	
not	
am	
I	

25.



Choice	Correct Order
.	
is	
bicycle	
red	
Her	

26.



Choice	Correct Order
hot	
?	
Is	
your	
face	

27.



Choice	Correct Order
house	
?	
you	
Are	
in	
your	

28.



Choice	Correct Order
name	
?	
What	
her	
is	

29.



Choice	Correct Order
?	
Where	
dog	
his	
is	

30.



Choice	Correct Order
house	
Their	
big	
is	
.	

210d. ΣΥΡΤΕ ΚΑΙ ΤΑΙΡΙΑΕΤΕ.

1.



Choice	Correct Match	Match
A. Hello! My name is John. What's _____ name?		it
B. _____ name is Jim.		your
A. _____ this your dog?		My
B. Yes, _____ is.		Is

2.



Choice	Correct Match	Match
A. Is this _____ sister?		she
B. Yes, _____ is my sister.		your
A. What's _____ name?		is
B. Her name _____ Helen.		her

3.



Choice	Correct Match	Match
A. Is this _____ brother?		is
B. Yes, _____ is my brother.		your
A. What's _____ name?		he
B. His name _____ Nick.		his

4.



Choice	Correct Match	Match
A. Are you _____ friends?		your
B. Yes, _____ are your friends.		Our
A. What are _____ names?		we
B. _____ names are John, Nick and Helen.		my

5.



Choice	Correct Match	Match
A. Are those _____ friends?		Their
B. Yes, _____ are our friends.		your
A. What are _____ names?		they
B. _____ names are Bill and Tim.		their

210e. ΣΥΡΤΕ ΚΑΙ ΤΑΙΡΙΑΞΤΕ.

1.

Choice	Correct Match	Match
your		δικός του
my		δικός της
her		δικός μου
his		δικός σου

2.

Choice	Correct Match	Match
our		δικός μου
your		δικός τους
my		δικός σας
their		δικός μας

3.

Choice	Correct Match	Match
piano		φωτογραφία
hot		φίλος
friend		ζεστός
photograph		πιάνο

4.

Choice	Correct Match	Match
nice		στο πάνω πάτωμα
bicycle		πρόσωπο
upstairs		ωραίο
face		ποδήλατο

5.

Choice	Correct Match	Match
bird		όνομα
name		μπότες
boots		δείπνο
dinner		πουλί

unit 211

The verb TO HAVE GOT:

I/You/We/You/They have got, He/She/It has got.

Have I/you/we/you/they got? Has he/she/it got?

I/You/We/You/They have not/haven't got.

He/She/It has not/hasn't got.

vocabulary – theory - examples

english	greek
bag	τσάντα
banana	μπανάνα
biscuits	μπισκότα
chocolate	σοκολάτα
clock	ρολόι τοίχου
ears	αυτιά
eye	μάτι
eyes	μάτια
game	παιχνίδι
glasses	γυαλιά
granny	γιαγιά
hair	μαλλιά
hands	χέρια
kite	χαρταετός
legs	πόδια
long	μακρύς
nose	μύτη
pyjamas	πυτζάμες
racket	ρακέτα
tennis	τέννις
watch	ρολόι χεριού

greek	english
αυτιά	
γιαγιά	
γυαλιά	
μακρύς	
μαλλιά	
μάτι	
μάτια	
μπανάνα	
μπισκότα	
μύτη	
παιχνίδι	
πόδια	
πυτζάμες	
ρακέτα	
ρολόι τοίχου	
ρολόι χεριού	
σοκολάτα	
τέννις	
τσάντα	
χαρταετός	
χέρια	

I HAVE GOT

Κατάφαση. Σχηματίζεται με το ρήμα TO HAVE και τη λέξη GOT.

I have got	I've got	Εγώ έχω
You have got	You've got	Εσύ έχεις
He has got	He's got	Αυτός έχει
She has got	She's got	Αυτή έχει
It has got	It's got	Αυτός/ή/ό έχει
We have got	We've got	Εμείς έχουμε
You have got	You've got	Εσείς έχετε
They have got	They've got	Αυτοί/ές/ά έχουν

Ερώτηση. Έχουμε αντιστροφή, οπότε το I have ... γίνεται Have I...?, κλπ.

Have I got?	Εχω εγώ;
Have you got?	Εχεις εσύ;
Has he got?	Εχει αυτός;
Has she got?	Εχει αυτή;
Has it got?	Εχει αυτός/ή/ό;
Have we got?	Εχουμε εμείς;
Have you got?	Εχετε εσείς;
Have they got?	Εχουν αυτοί/ές/ά;

Αρνηση. Προσθέτουμε το NOT, οπότε το I have ... γίνεται I have not ..., κλπ.

I have not got	I haven't got	Εγώ δεν έχω
You have not got	You haven't got	Εσύ δεν έχεις
He has not got	He hasn't got	Αυτός δεν έχει
She has not got	She hasn't got	Αυτή δεν έχει
It has not got	It hasn't got	Αυτός/ή/ό δεν έχει
We have not got	We haven't got	Εμείς δεν έχουμε
You have not got	You haven't got	Εσείς δεν έχετε
They have not got	They haven't got	Αυτοί/ές/ά δεν έχουν

A. **Have** the rabbits got carrots?
B. No, they **have not** got carrots.
They **have** got apples.

A. Εχουν τα κουνέλια καρότα;
B. Οχι, δεν έχουν καρότα.
Εχουν μήλα

A. **Have** you got a hamburger?
B. No, I **haven't** got a hamburger.
I've got an orange.

A. Εχεις ένα χάμπουργκερ;
B. Οχι, δεν έχω χάμπουργκερ.
Εχω πορτοκάλι.

A. **Has** he got an umbrella?
B. No, he **hasn't** got an umbrella.
He's got a hat.

A. Εχει αυτός ομπρέλλα;
B. Οχι, δεν έχει ομπρέλλα.
Εχει καπέλο.

A. **Has** she got a bicycle?
B. No, she **hasn't** got a bicycle.
She's got a motorbike.

A. Εχει αυτή ποδήλατο;
B. Οχι, δεν έχει ποδήλατο.
Εχει μοτοποδήλατο.

unit 211

The verb TO HAVE GOT:
I/You/We/You/They have got, He/She/It has got.
Have I/you/we/you/they got? Has he/she/it got?
I/You/We/You/They have not/haven't got.
He/She/It has not/hasn't got.

e-learning exercises

211a. ΚΑΝΤΕ ΚΛΙΚ ΣΤΗ ΣΩΣΤΗ ΕΠΙΛΟΓΗ.

1. I _____ long hair.



has got have got
 my are am

4. She _____ got a clock.



haven't not
 isn't hasn't

7. What _____?



he's got he is
 has he got he has got

2. She _____ long legs.



is is got
 have got has got

5. I _____ a red car.



am 've got
 it's my 's got

8. _____ a cat?



Has got she She's got
 It's Has she got

3. _____ green jackets?



You've got Have you got
 Got you have You have got

6. I _____ in my red car.



's got 'm
 it's 've got

9. Jim _____ a nice suit.



have got has got
 his is got

10. What _____ they got?



has are
have is

11. What _____ they?



have got has got
are is

12. A. What has the cat got?
B. It _____ got a mouse.



've have
is has

13. A. Have they got new glasses?
B. Yes, they _____ .



aren't are
have has

14. A. Are their glasses new?
B. Yes, they _____ .



has have got
are have

15. I _____ a brother.



have got is
am his has got

16. I _____ brother.



've got have got
am his am

17. His brother _____ Jim.



he's has
is have

18. His brother _____ a car.



is got have
is has got

19. Your house _____ two doors.



has got have got
is are

20. Have _____ got red shoes?



we are are we
we you are

211b. ΚΑΝΤΕ ΚΛΙΚ ΣΤΗ ΣΩΣΤΗ ΕΠΙΛΟΓΗ.

1. The baby _____ got an ice cream.
()haven't ()hasn't
2. You _____ a sad girl.
()hasn't ()aren't
3. _____ you got new books?
()Have ()Are
4. Their shoes _____ new.
()have ()are
5. He _____ got a boat.
()has ()is
6. She _____ got a tennis racket.
()haven't ()hasn't
7. The cat _____ got a mouse.
()have ()has
8. _____ the dogs got a big fish?
()Have ()Has
9. _____ you got an umbrella?
()Have ()Has
10. The boys _____ got a kite.
()have ()has
11. I _____ got your chocolate.
()have ()has
12. _____ we got red strawberries?
()Have ()Has
13. They _____ got new computer games.
()haven't ()hasn't
14. He _____ got long hair.
()have ()has
15. We _____ got brown pyjamas.
()have ()are
16. You _____ got a bicycle.
()have ()has
17. We _____ got a new car.
()have ()are
18. Our granny _____ old.
()has ()is
19. _____ I young?
()Have ()Am
20. _____ Jim got a blue car?
()Has ()Is
21. _____ Hans from Germany?
()Has ()Is
22. _____ Helen got long hair?
()Has ()Is
23. _____ you sad?
()Have ()Are
24. _____ they fat?
()Have ()Are
25. I _____ got a motorbike.
()haven't ()am not
26. I _____ in my garden.
()haven't ()am not
27. He _____ a policeman.
()haven't ()isn't
28. He _____ got an umbrella.
()hasn't ()isn't
29. Tom _____ from Italy.
()hasn't ()isn't
30. Bob _____ got a yellow jacket.
()hasn't ()isn't

31. This _____ his sister.

()has ()is

32. The boys _____ got new shoes.

()have ()are

33. _____ she from Spain?

()Has ()Is

34. You _____ got an old house.

()haven't ()aren't

35. Mary _____ in the bus.

()hasn't ()isn't

211c. ΣΥΡΤΕ ΚΑΙ ΒΑΛΤΕ ΣΤΗ ΣΩΣΤΗ ΣΕΙΡΑ .



Choice	Correct Order
nice	
He	
has	
a	
cat.	
got	



Choice	Correct Order
has	
big	
a	
got	
dog.	
She	



Choice	Correct Order
?	
you	
Have	
jackets	
got	
red	



Choice	Correct Order
nice	
His	
.	
cat	
is	



Choice	Correct Order
.	
Its	
is	
colour	
white	



Choice	Correct Order
?	
Are	
car	
in	
your	
you	



Choice	Correct Order
got	
a small	
has	
cat	
His	
nose.	



Choice	Correct Order
house.	
haven't	
They	
nice	
got	
a	



Choice	Correct Order
?	
cat	
a	
Has	
got	
she	

10.



Choice	Correct Order
got	
?	
What	
have	
they	

211d. ΣΥΠΤΕ ΚΑΙ ΤΑΙΡΙΑΕΤΕ.

1.

Choice	Correct Match	Match
A. _____ you Jim?		Have
B. Yes, I _____ .		Are
A. _____ you got long hair?		haven't
B. No, I _____ got long hair.		am

2.

Choice	Correct Match	Match
A. _____ you got short hair?		it
B. Yes, I _____ .		Have
A. _____ your hair long?		have
B. No, _____ isn't long.		Is

3.

Choice	Correct Match	Match
A. _____ your hair short?		have
B. Yes, it _____ .		Is
A. _____ you got a sister?		is
B. Yes, I _____ .		Have

4.

Choice	Correct Match	Match
A. _____ Helen your sister?		hasn't
B. Yes, she _____ .		Has
A. _____ she got blue eyes?		Is
B. No, she _____ got blue eyes.		is

5.

Choice	Correct Match	Match
A. _____ she got green eyes?		she's
B. Yes, _____ got green eyes.		Has
A. _____ her eyes blue?		aren't
B. No, they _____ blue.		Are

6.

Choice	Correct Match	Match
A. Are they _____ ?		They
B. _____, they are.		green
A. What _____ are her eyes?		Yes
B. _____ are green.		colour

211e. ΣΥΡΤΕ ΚΑΙ ΤΑΙΡΙΑΞΤΕ.

1.

Choice	Correct Match	Match
tennis		ρακέτα
eye		γυαλιά
racket		μαλλιά
eyes		μάτι
glasses		μάτια
hair		τέννις

2.

Choice	Correct Match	Match
bag		πόδια
legs		παιχνίδι
long		τσάντα
ears		μακρύς
kite		αυτιά
game		χαρταετός

3.

Choice	Correct Match	Match
pyjamas		χέρια
nose		μπανάνα
hands		μούτη
banana		γιαγιά
granny		πτυζάμες

4.

Choice	Correct Match	Match
clock		μπισκότα
banana		ρολόι τοίχου
biscuits		μπανάνα
watch		σοκολάτα
chocolate		ρολόι χεριού

unit 212

Present continuous = The verb TO BE + ...ING

I am/You are/He is/.../They are playing.

Am I/Are you?Is he.../Are they playing?

I am not/....They are not/aren't playing.

vocabulary – theory – examples

english	greek
climb	σκαρφαλώνω
cry	κλαίω
do	κάνω
eat	τρώω
fight	μαλώνω
go	πηγαίνω
look	κοιτάζω
play	παίζω
read	διαβάζω
sleep	κοιμάμαι
wait	περιμένω
watch	παρακολουθώ
wear	φοράω

greek	english
διαβάζω	
κάνω	
κλαίω	
κοιμάμαι	
κοιτάζω	
μαλώνω	
παίζω	
παρακολουθώ	
περιμένω	
πηγαίνω	
σκαρφαλώνω	
τρώω	
φοράω	

PRESENT CONTINUOUS (ΕΝΕΣΤΩΤΑΣ ΔΙΑΡΚΕΙΑΣ)

Κατάφαση

Σχηματίζεται με το ρήμα TO BE (I AM, ...) και την κατάληξη -ING στο κύριο ρήμα.

Π.χ. I am climb-ing, You are cry-ing, He is do-ing, She is eat-ing, It is fight-ing, We are go-ing, You are look-ing, They are play-ing, I am read-ing, You are sleep-ing, He is wait-ing, She is watch-ing, They are wear-ing

I am playing	I' m playing	παίζω
You are playing	You' re playing	παίζεις
He is playing	He' s playing	παίζει
She is playing	She' s playing	παίζει
It is playing	It' s playing	παίζει
We are playing	We' re playing	παίζουμε
You are playing	You' re playing	παίζετε
They are playing	They' re playing	παίζουν

Ερώτηση
 Έχουμε αντιστροφή του ρήματος **TO BE**, οπότε
 το **I am ... γίνεται Am I ...?**, κλπ.

Am I playing?	παίζω;
Are you playing?	παίζεις;
Is he playing?	παίζει;
Is she playing?	παίζει;
Is it playing?	παίζει;
Are we playing?	παίζουμε;
Are you playing?	παίζετε;
Are they playing?	παίζουν;

Αρνηση
 Προσθέτουμε το **NOT** αμέσως μετά το **TO BE**, οπότε
 το **I am** γίνεται **I am not**, κλπ.

I am not playing	I'm not playing	δεν παίζω
You are not playing	You aren't playing	δεν παίζεις
He is not playing	He isn't playing	δεν παίζει
She is not playing	She isn't playing	δεν παίζει
It is not playing	It isn't playing	δεν παίζει
We are not playing	We aren't playing	δεν παίζουμε
You are not playing	You aren't playing	δεν παίζετε
They are not playing	They aren't playing	δεν παίζουν

Ο Ενεστώτας Διάρκειας χρησιμοποιείται για πράξεις που γίνονται την ώρα που μιλάμε.

A. Are you eating ? B. No, I am not eating . I'm doing my homework.	A. Τρως (τώρα); B. Οχι, δεν τρώω. Κάνω τις ασκήσεις μου για το σπίτι.
A. Is he watching TV? B. No, he isn't. He's playing .	A. Αυτός βλέπει τηλεόραση; B. Οχι, δεν βλέπει. Παίζει.
A. Is she going by train? B. No, she isn't. She's going by bus.	A. Αυτή πάει με το τραίνο; B. Οχι, δεν πάει. Πάει με το λεωφορείο.
A. Is the cat climbing trees? B. No, it isn't climbing trees. It's eating .	A. Η γάτα σκαρφαλώνει σε δέντρα ; B. Οχι, δεν σκαρφαλώνει σε δέντρα. Τρώει.
A. Are you playing computer games? B. No, we aren't. We are playing with our trains.	A. Παίζετε εσείς παιχνίδια στον υπολογιστή; B. Οχι, δεν παίζουμε. Παίζουμε με τα τραινάκια μας.
A. Are they going upstairs? B. No, they aren't. They are having breakfast.	A. Πάνε αυτοί στο πάνω πάτωμα; B. Οχι, δεν πάνε. Παίρνουν πρωινό.

unit 212

Present continuous = The verb TO BE + ...ING

I am/You are/He is/.../They are playing.

Am I/Are you?Is he.../Are they playing?

I am not/....They are not/aren't playing.

e-learning exercises

212a. ΚΑΝΤΕ ΚΛΙΚ ΣΤΗ ΣΩΣΤΗ ΕΠΙΛΟΓΗ.

1. _____ watching TV.



Am He
 I am I

2. _____ going upstairs.



You are You
 Are Is

3. He _____ his breakfast.



is have
 is having having

4. _____ playing?



Its Is it
 It is It's

5. What _____ doing?



are you he is
 are you are

6. Are _____ your homework?



you you doing
 they doing

7. They _____ watching TV.



have have got
 are is

8. They _____ got a new TV.



has are
 is have

9. We are _____ our lunch.



climbing eating
 playing going

10. _____ the cat eating a fish?



Are Is
 Has Have

212b. ΣΥΡΤΕ ΚΑΙ ΒΑΛΤΕ ΣΤΗ ΣΩΣΤΗ ΣΕΙΡΑ .

1.



Choice	Correct Order
b	
i	
cli	
m	
n	
g	

2.



Choice	Correct Order
i	
go	
g	
n	

3.



Choice	Correct Order
a	
e	
n	
t	
g	
i	

4.



Choice	Correct Order
i	
y	
n	
a	
g	
pl	

5.



Choice	Correct Order
g	
n	
d	
i	
o	

6.



Choice	Correct Order
t	
ch	
g	
wa	
i	
n	

7.



Choice	Correct Order
g	
i	
k	
l	
oo	
n	

8.



Choice	Correct Order
n	
i	
p	
sl	
g	
ee	

9.



Choice	Correct Order
e	
n	
w	
ar	
i	
g	

10.



Choice	Correct Order
t	
i	
n	
gh	
fi	
g	

11.



Choice	Correct Order
n	
i	
y	
c	
g	
r	

12.



Choice	Correct Order
n	
i	
e	
d	
a	
g	
r	

13.



Choice	Correct Order
w	
t	
g	
ai	
n	
i	

14.



Choice	Correct Order
a	
h	
g	
n	
i	
v	

212c. ΣΥΡΤΕ ΚΑΙ ΤΑΙΡΙΑΕΤΕ.

1.

Choice	Correct Match	Match
She		am playing with a ball.
You		has got green pyjamas.
I		are wearing green pyjamas.

2.

Choice	Correct Match	Match
He		are watching TV.
We		are red.
The balls		has got two balls.

3.

Choice	Correct Match	Match
We		am going upstairs.
The cat		are eating breakfast.
I		is playing in the garden.

4.

Choice	Correct Match	Match
We		is eating an orange.
She		am eating a sandwich.
I		are sleeping.

5.

Choice	Correct Match	Match
I		are fighting.
The baby		am waiting for the bus.
The lions		is crying.

6.

Choice	Correct Match	Match
He		am going by train.
They		is wearing a black suit.
I		are playing computer games.

7.

Choice	Correct Match	Match
She		am in the garden.
I		are doing their homework.
They		has got a new computer.

212d. ΣΥΠΤΕ ΚΑΙ ΤΑΙΡΙΑΕΤΕ.

1.

Choice	Correct Match	Match
A. _____ have you got?		your
B. _____ have got a ball.		What
A. What colour is _____ ball?		It
B. _____ is yellow.		I

2.

Choice	Correct Match	Match
A. What are you _____ with your ball?		Is
B. I'm _____ with my ball.		isn't
A. _____ it a football?		playing
B. No, it _____ a football. It is a volleyball.		doing

3.

Choice	Correct Match	Match
A. _____ your sister playing with the ball?		Are
B. No, she isn't playing with the ball. She _____ doing her homework.		am
A. _____ you doing your homework?		Is
B. No, I _____ not doing my homework.		is

4.

Choice	Correct Match	Match
A. Is your dog _____ with the ball?		eating
B. No, it isn't playing with the ball. It is _____ .		doing
A. What is your cat _____ ?		playing
B. It is _____ a fish.		sleeping

5.

Choice	Correct Match	Match
A. What are your father and mother _____ ?		watching
B. They are _____ TV.		doing
A. _____ they got an old TV?		is
B. No, the TV _____ new.		Have

212e. ΣΥΠΤΕ ΚΑΙ ΤΑΙΡΙΑΞΤΕ.

1.

Choice	Correct Match	Match
I am going		σκαρφαλώνουμε
We are climbing		σκαρφαλώνουν
You are going		σκαρφαλώνει
You are climbing		πηγαίνω
They are climbing		σκαρφαλώνετε
He is climbing		πηγαίνεις

2.

Choice	Correct Match	Match
She is eating		πηγαίνει
She is going		τρώω
They are going		τρώει
You are going		πηγαίνουν
You are eating		πηγαίνετε
I am eating		τρώς

4.

Choice	Correct Match	Match
We are playing		κάνουμε
We are doing		κάνετε
You are doing		παίζει
He is doing		παίζουμε
You are playing		κάνει
She is playing		παίζετε

3.

Choice	Correct Match	Match
We are eating		παίζω
You are playing		παίζει
It is eating		τρώνε
I am playing		τρώμε
They are eating		τρώει
He is playing		παίζεις

5.

Choice	Correct Match	Match
I'm climbing		σκαρφαλώνεις
He's going		τρώει
You're eating		πηγαίνουμε
You're climbing		σκαρφαλώνω
We're going		πηγαίνει
He's eating		τρώτε

6.

Choice	Correct Match	Match
He is watching		κάνω
It is playing		παρακολουθεί
I am doing		κάνεις
They are playing		παρακολουθούν
They are watching		παίζει
You are doing		παίζουν

7.

Choice	Correct Match	Match
It is sleeping		φοράω
She is looking		κοιτάξεις
We are sleeping		φοράει
You are looking		κοιμάται
I am wearing		κοιμόμαστε
It is wearing		κοιτάζει

8.

Choice	Correct Match	Match
You are waiting		περιμένει
We are reading		περιμένεις
He is reading		μαλώνουμε
She is waiting		διαβάζουμε
We are fighting		μαλώνετε
You are fighting		διαβάζει